

# Southern Expressions

Alabama

Georgia

Puerto Rico

Tennessee

Florida

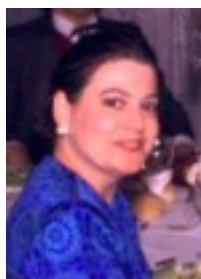
Mississippi

South Carolina

Virgin Islands

## Message from the Chair

Lynn Fortney



Fortney

Some of you may be thinking about and preparing for the Annual Meeting of the Medical Library Association in Orlando at the end of May. Others may be wishing they'd been able to justify the cost to their administration (or to their own bank account). A few may think only the "lucky" ones among us get to go - and to a location in the heart of Walt Disney World, no less! I think that those of us who are able to attend

MLA's annual meeting do consider ourselves "lucky",

because participating in professional activities at the local, state or national level is enlightening, energizing, and provides untold opportunities for networking and professional education. However, "luck" does not come without hard work, professional dedication, loss of personal free time and even some financial sacrifices. The Southern Chapter of the Medical Library Association has many, many members who contribute considerable amounts of time and energy to MLA. Since SC/MLA is the "host chapter" for the Orlando meeting, we will be working overtime at MLA, but we'll be having fun while we're at it!

When my good friend Nancy Clemmons asked me to consider the job (and it IS a job!) of SC/MLA Chair back in the summer of 1999, I was hugely thrilled and very humbled. There aren't too many people with jobs outside of a library who have an opportunity to continue their involvement with library organizations. I know that MLA, SC/MLA, and even the Alabama Health Libraries Association (ALHeLA) have made a world of difference in my library career, and I made it clear when I joined EBSCO twelve years ago that my continued participation in these organizations was important to me. At the annual meetings of these three organizations, I learned more about MEDLINE, library design, management, marketing, library automation, statistics, research methods, collection development, and yes, even serials (!) than I ever would have discovered within the confines of my library employment. And what I learned, I took back to my institutions, and talked about with library staff...and probably more importantly, with deans and administrators. That last group is the one that takes some convincing, especially since they become suspicious of your motives for spending four or five days in some interesting locale, like Walt Disney World. They have no idea just how intense those few days can be.

(continued on p. 5)

Volume 17, Number 2,  
Spring 2001

### In This Issue:

Announcements.....18,23

Annual Meetings.....14,17,24

Around the South.....3,4,6,  
10,11,15,19,21,22

Benchmarking.....9,16

Chapter Council News.....8

Committee Reports.....12,20,23

Message from the Chair.....1,5

Personals.....7

Publication Schedule.....below

Research Spotlight.....13-14

### Southern Chapter

<http://www.uab.edu/lister/scmla>

**Next reporting deadline**  
June 15th, 2001

**Next Publication Date**  
July 15th, 2001

## **ELECTED OFFICIALS**

### Chair

Lynn Fortney  
EBSCO Information Services  
Birmingham, AL  
lynnf@ebSCO.com

### Chair-Elect/Program Chair

Janet Fisher  
Quillen College of Medicine Library  
East Tennessee State University  
Johnson City, TN  
fisherj@etsu.edu

### Secretary/Treasurer

Brenda Faye Green  
Health Sciences Library  
University of Tennessee Health Sciences Center  
Memphis, TN  
bfgreen@utmem1.utmem.edu

### Past Chair/Nominating Chair

Thomas Singarella  
Health Sciences Library  
University of Tennessee Memphis  
Memphis, TN  
tsingarella@utmem.edu

### MLA Nomin Comm Candidate

T. Scott Plutchak  
Lister Hill Library of the Health Sciences  
University of Alabama at Birmingham  
Birmingham, AL  
tscott@uab.edu

### Chapter Council Rep

Sarah Gable  
School of Medicine Library  
University of South Carolina  
Columbia, SC  
sarah@med.sc.edu

### Chapter Council Alternate 5/97-5/2000

Jan LaBeause  
Medicine Library/LRC  
Mercer University School of Medicine  
Macon, GA  
labeause.j@gain.mercer.edu

## **APPOINTED OFFICIALS**

### Archivist

Mary Lynch  
Health Sciences Center Library  
Emory University School of Medicine  
Atlanta, GA  
libmcl@emory.edu

### Bookkeeper

Marilee Creelan  
Greenblatt Library  
Medical College of Georgia  
Augusta, GA  
mcreelan@mail.mcg.edu

### Historian

T. Mark Hodges  
Nashville, TN  
tmhodges33@aol.com

### MLA Credentialing Liaison

Sandra Franklin  
Health Sciences Center Library  
Emory University School of Medicine  
Atlanta, GA  
librsf@emory.edu

### Membership Database Manager

Linda Flavin  
Birmingham, AL  
lflavin@aol.com

### Parliamentarian/Historian

Danny O'Neal  
Health Sciences Center Library  
University of South Florida  
Tampa, FL  
doneal@com1.med.usf.edu

### Southern Expressions Co-Editors

Ingrid Hendrix  
Health Sciences Center Library  
Emory University  
Atlanta, GA  
libich@emory.edu

### Sondra Pfeiffer

Lister Hill Library of the Health Sciences  
University of Alabama at Birmingham  
Birmingham, AL  
Sondra@uab.edu

### SoChap-L Moderator

Nelle Williams  
Health Sciences Library  
University of Alabama  
Tuscaloosa, AL  
nwilliam@cchs.ua.edu

### Web Site Coordinator

Pat Higginbottom  
Lister Hill Library of the Health Sciences  
University of Alabama at Birmingham  
Birmingham, AL  
phiggin@uab.edu

## **COMMITTEE CHAIRS**

### Bylaws

Lois Bellamy  
Health Sciences Library  
University of Tennessee, Memphis  
Memphis, TN  
lbellamy@utmem1.utmem.edu

### Communications

Cecelia Delbridge  
J Manning Hudson Health Science Library  
Baptist Health Systems  
Jackson, MS  
cdelbridge@mbmc.org

### Governmental Relations

Connie Machado  
Rowland Medical Library  
University of Mississippi Medical Center  
Jackson, MS  
cmachado@rowland.umsmed.edu

### History of the Southern Chapter

Richard Nollan  
Health Sciences Library  
University of Tennessee, Memphis  
Memphis, TN  
rnollan@utmem1.utmem.edu

### Honors & Awards

Marcia Reinhardt  
Medical University of South Carolina  
Charleston, SC  
reinham@musc.edu

### Hospital Libraries

Mary Fran Prottzman  
US Army Aeromedical Center  
Fort Rucker, AL  
prott@entercomp.com

### Membership

Marian Morris  
McMahon Sibley Medical Library  
Princeton Baptist Medical Center  
Birmingham, AL  
marian.morris@bhsala.com

### Professional Development

Rebecca Fehrenback  
Greenblatt Library  
Medical College of Georgia  
Augusta, GA  
rfehrenb@mail.mcg.edu

### Research

Helvi McCall  
Rowland Medical Library  
University of Mississippi Medical Center  
Jackson, MS  
hmccall@rowland.umsmed.edu

### Strategic Planning

Rosalind Lett  
Emory Healthcare/Crawford Long Hospital  
Atlanta, GA  
rosalind\_lett@emory.org

## **Southern Expressions**

Newsletter of the Southern Chapter / Medical Library Association

is published quarterly by the Southern Chapter of the Medical Library Association, Inc., a 501c3 organization. Please send contributions to the editors:

Ingrid Hendrix  
Health Sciences Center Library  
Emory University School of Medicine  
1462 Clifton Rd.  
Atlanta, GA 30322  
Voice:404-727-5829  
Fax:404-727-8469  
libich@emory.edu

Sondra Pfeiffer  
Lister Hill Library  
University of Alabama at Birmingham  
1700 University Blvd.  
Birmingham, AL 35294-0013  
Voice:205-934-2230  
Fax: 205-975-8313  
Sondra@uab.edu

### **Content policy for Southern Expressions**

Statements and opinions expressed in Southern Expressions do not necessarily represent the official position of its co-editors or the Southern Chapter of the Medical Library Association. Contributions may be edited for brevity, clarity, or conformity to style. Final decision on the content of *Southern Expressions* shall be left to the discretion of the co-Editors with the advice of the Communications Committee of the Southern Chapter/Medical Library Association.

## *Around the South*

### News from Tennessee

**Mary Congleton**, formerly Librarian at Baptist Hospital of East Tennessee, is now Librarian for the Southeastern Kentucky AHEC.

**Patsy Ellis**, formerly the Library Director for the Holston Valley Medical Center and Bristol Regional Medical Center libraries, is now the librarian at the James H. Quillen Veterans Affairs Medical Center in Mountain Home.

**Andrea Batson**, formerly Science Reference Librarian, Tennessee Technological University, Cookeville, had her baby, Ellie, on January 10. Andrea resigned her position at TTU on March 14, but plans to stay involved in libraries.

The Preston Medical Library, UT Medical Center in Knoxville, held their annual Doctors Day celebration on March 30. Librarians hosted an open house complete with food, a book giveaway, and a red carnation for each physician.

**Brenda Faye Green**, University of Tennessee Health Science Center Library and Philip Williams, Memphis/Shelby County Public Library and Information Center were awarded a grant from the National Network/Libraries of Medicine, Southeastern Atlantic Office to exhibit National Library of Medicine products and services during the Tennessee Library Association Meeting in Nashville. Librarians visiting the booth will learn about services at both libraries which are available to the public. They will also see demonstrations of free web based resources which seek to improve human health through access to information.

**Brenda** is also Chair of the Special Libraries Section of the Tennessee Library Association. She organized a panel for the annual TLA Conference in Nashville in April on Health Sciences Libraries and Consumer Health Information. Panelists included Kay Cunningham, St. Jude's Hospital and Research Center; Nila Sathe, Eskin Biomedical Library,

Vanderbilt University; **Brenda F. Green** and **Gwen Jackson**, University of Tennessee Health Science Center; and **Martha Earl**, University of Tennessee Medical Center, Knoxville.

**Cheryl Hamberg**, Meharry Medical College Library, has announced her retirement after 12 years as Director and more than 20 years of service to the College. The Mid-Tennessee Health Science Librarians Association held a luncheon in her honor at the University Club on March 21. Congratulations, **Cheryl**.

The James H. Quillen College of Medicine Library at East Tennessee State University in Johnson City, TN, was recently awarded an information access grant from the National Library of Medicine for \$106,742. The grant will provide computer workstations and Internet connections for 20 rural or underserved health care locations in Northeast Tennessee. The institutions will receive access to medical databases, including MD Consult, and free interlibrary loan credits. Librarians will provide training and consultation as part of the grant services. A part time library assistant will install the equipment. Librarians involved are **Rick Wallace, Janet S. Fisher, Suresh Ponnappa** and **Ross Bowron**.

The Tennessee Health Sciences Libraries Association and the Knoxville Area Health Sciences Libraries Consortium held their joint spring 2001 meeting at the Valley View Lodge in Townsend. **Bryan Vogh**, Internet Coordinator NN/LM Southeastern Atlantic Region, spoke on "Electronic Document Delivery Technologies."

The Tri-Cities Area Health Sciences Libraries Consortium hosted "Keeping Up with NLM's PubMed, the NLM Gateway, and ClinicalTrials.gov" in Johnson City on April 6.

*Submitted by Martha F. Earl*



## *Around the South*



### **New Fellow and Digital Library Technical Specialist at the Center for Disease Control Information Center**

**New Outreach Associate at CDC: Karen Dahlen.** MLS, AHIP, has accepted an outreach fellow position at the CDC Information Center, effective January 1, 2001. Karen brings much valuable experience and skills that will help the CDC move toward its new vision for the Information Center. Karen will be assisting in many areas including the design of the new building, but her primary focus will be to lead the development of the Information Center education and training initiative. She looks forward to contacting many of you already working on projects related to training the public health workforce.

Karen can be reached at [kdahlen@cdc.gov](mailto:kdahlen@cdc.gov).

**New Digital Library Technical Information Specialist: Mamie Bell,** MLn, has been appointed as a Digital Library TIS at the CDC Information Center. Mamie received her training in library and information science from Emory University and also holds a graduate degree from the University of Georgia. She was previously employed as Chief Health Sciences Librarian at Children's Healthcare of Atlanta. While at Children's, Mamie developed the library services from one part-time position to a system-wide service that included health science and consumer health libraries. Mamie can be reached at [mbell1@cdc.gov](mailto:mbell1@cdc.gov)

*Submitted by Jocelyn Rinkin*

### **New Faculty Position Filled at Louis Calder Memorial Library University of Miami School of Medicine**

We have a new faculty position (first one in many years) in the Reference and Education Services Department. It was filled beginning today by **Tanya Feddern**, MLIS, MOT. Tanya received her MLIS from the University of South Florida in December 2000 and her Masters in Occupational Therapy from Nova Southeastern University in May 2000. Since 1997, she worked in the Health Professions Division Library of Nova Southeastern and the Southwest Regional Library of Broward County Public Libraries where she gained experience in medical reference services and end-user Web-based educational activities. She is a member of many library and occupational therapy associations and of the Golden Key National Honor Society.

*Submitted by Suzetta C. Burrows*

## *Message from the Chair*

*continued from p.1*

Little did I know when I consented to run for SC/MLA Chair-Elect that I would be nominated for the Board of Directors of the Medical Library Association. I consulted with a trusted and experienced mentor who had served on the Board and had been President of MLA. She told me I should go ahead and run, even though my name was already up for Southern Chapter Chair. Neither of us expected me to win the Board election. Even mentors can be wrong.

What this means for me at the Orlando meeting is that I'll be juggling Board responsibilities, Chapter Chair responsibilities and EBSCO responsibilities, while still trying to learn about new and interesting developments at the various meeting sessions, spending time with my friends and colleagues, and enjoying the fact that my husband (of course) and daughter will be there with me. I used the nifty Itinerary Builder on the MLA meeting site and have discovered that my time is already fully booked all day, every day, including meals, from the Board meeting on Thursday May 24th, through the last meeting on Wednesday, May 30th. So it looks as though there will be no Mickey-Mousing around for me, at least until it's all over. I'll love every minute of it.

Serving on MLA's Board of Directors is an experience. We meet face-to-face in two-three day meetings three times a year. The Board agenda book fills a two-inch 3-ring binder for EACH MEETING and we go through almost each and every page. As we deliberate and make decisions, I keep firmly in mind that I am there to represent the membership and not my own personal views. Even as an active MLA member, I had no idea how many projects and initiatives MLA is involved with. I think MLA needs to do a better job about communicating this out to the members, and to the non-member medical library community as well. MLA is a volunteer organization with a relatively small but very dedicated headquarters staff, so in order to get anything done or to make any changes, we need the time and expertise of many, many members.

However, compared to the workload of being Southern Chapter Chair, serving on MLA's Board of

Directors is a walk in the park. There is SC/MLA business that comes to me via e-mail almost every single day. Right now, I'm very involved with Janet Fisher and Rebecca Fehrenbach in the planning for the Tri-Chapter Meeting in New Orleans. The invited speakers will be James J. O'Donnell, Vice Provost for Information Systems and Computing at University of Pennsylvania and author of "Avatars of the Word: From Papyrus to Cyberspace"; John M. Barry, author of "Rising Tide" and forthcoming book on the flu epidemic of 1918 as well as co-author of "The Transformed Cell" about cancer; and Joanne Marshall, Dean of the School of Information and Library Science at UNC Chapel Hill, former member of MLA Board, and former hospital librarian. The banquet will be Saturday night at Michaul's Live Cajun Music Restaurant. The locals tell us that the food is great and the Cajun music and dance lessons are a lot of fun. If this sounds interesting to you, but you need another reason to present to your administrator for funding, the call for contributed papers and the deadline is fast approaching.

In this issue of Southern Expressions, you'll find an article from Rebecca Fehrenbach about the "combo" CE + Registration package which the Executive Board is funding for our members from the SC/MLA Treasury. We're trying to keep the cost of registering for this "mega" chapter meeting within reasonable limits and encourage both attendance and the professional continuing education of our members. I have some other ideas about how to reduce costs and encourage meeting attendance that we'll be discussing at the SC/MLA Executive Board meeting Tuesday afternoon, May 29th, in Orlando.

SC/MLA is a high-energy group. This was evident in the plethora of creative suggestions and vehement opinions regarding a possible "symbol" or identifier for SC/MLA. No, we don't have a decision yet and with so many options on the table, maybe we never will. But you can be sure the Executive Board will be discussing this as well. After all - SC/MLA needs SOME sort of project to work on if we expect to maintain our record-breaking Majors/Chapter Project of the Year winning streak. Martha Watkins would have wanted it that way.

Lynn M. Fortney, M.L.S. - Chair/SC/MLA

## *Around the South*

### **SC/MLA Wins Majors/Chapter Project of the Year Award!**

I am delighted and proud to announce that Southern Chapter will once again receive the Majors/MLA Chapter Project of the Year Award, this time for our Martha Childs Watkins Scholarship.

Established in 1996, the Chapter Project of the Year Award sponsored by Majors Scientific Books, recognizes excellence, innovation and contribution to the profession of health sciences librarianship.

The 2001 award will be the THIRD time the SC/MLA has received this award. The Southern Chapter won the first Majors/MLA Chapter Project of the Year Award in 1996 for our part in raising \$100,000, the goal set by the MLA Board of Directors Ad Hoc Committee to Establish the Cunningham Endowment in 1987. Our chapter won the award again in 1998, this time for our Journal Usage Study project. Conducted in 3 phases, in all about 50 libraries participated in the Journal Usage Study. Results were shared at Annual MLA meetings in 1995 and 1996 and a report was published in the Bulletin of the Medical Library Association in July of 1998.

The Martha Childs Watkins Scholarship (<http://www.uab.edu/lister/scmla/mom.htm>) was established in 1996 to honor Martha, who was not

only past president of SC/MLA, but also a founding member of the Southeastern Conference of Hospital Librarians (SCHL), and a friend and mentor to a generation of hospital and other health sciences librarians in the South. The scholarship provides

funding to current Southern Chapter members who work in a hospital library and who want to take a course or workshop at the Southern Chapter annual meeting. Through sales of quilted

Christmas ornaments and raffled needlework at the annual meeting, we raised enough money to endow the scholarship in 1999. However, the sale of the ornaments and artwork continues by popular demand!

Many thanks to the many of you who have actively participated in raising money for this project, and especially to Jan LaBeause, who put together the winning proposal to the MLA Awards Committee. Those of us who were lucky enough to have known Martha Watkins know she is beaming, and very proud of us.

Lynn M. Fortney, M.L.S. - SC/MLA Chair



1996  
Reached Chapter Goal  
for  
Cunningham Endowment



2001  
Martha Childs Watkins  
Scholarship



1998  
Journal Usage Study  
Project

## *Personals*

### **T. Scott Plutchak to Receive Estelle Brodman Award**



Plutchak

**T. Scott Plutchak**, Director of Lister Hill Library, will be awarded the Estelle Brodman Academic Medical Librarian of the Year honor by the Medical Library Association (MLA) in May, 2001. This award is in recognition of “significant achievement, the potential for leadership, and continuing excellence” at mid-career in an academic health sciences librarian. Plutchak, a Distinguished member of the Academy of Health Information Professionals, has served on two MLA National Program Committees, was chair of the review committee for the National Library of Medicine Internet Connection Grants for four years, is the current editor of the Bulletin of the Medical Library Association (BMLA) and past chair the Medical School Library Section. As chair of the Electronic Access Committee for the Network of Alabama Academic Libraries (NAAL), he was instrumental in helping to establish the Alabama Virtual Library, a core of information resources and databases available to every student and citizen in the state. He was also recently named Academic Librarian of the Year by the MLA Southern Chapter (2000).

The Estelle Brodman Award, established in 1986, recognizes Dr. Brodman’s exemplary career as an educator, administrator, technological innovator, and seminal thinker, as well as her influence on countless medical librarians who have themselves gone on to become leaders in the profession.

*Submitted by Kay Hogan Smith*

### **Cheryl Hamberg Retires**

**Cheryl Hamburg**, director of the medical library at Meharry Medical College in Nashville since 1989, will be retiring shortly. To mark the event, the Mid-Tennessee Health Science Librarians Association (MTHSLA) organized a luncheon in her honor, which was held at the University Club of Nashville on Wednesday, 21<sup>st</sup> March 2001.

Cheryl, who received her bachelor’s degree from Fisk University and her library degree from Peabody College, spent her entire professional career at Meharry, beginning in 1978. During that time she held many important assignments, including membership on the NLM’s Biomedical Library Review Committee. She has also developed and taught MLA CE courses.

Among those paying tribute to Cheryl at the lunch were former members of her staff, colleagues in MTHSLA, a senior member of Meharry’s administration, and **Edwin Gleaves**, former dean of Peabody Library School (now Tennessee State Librarian). Present at the festivities were Cheryl’s husband, **Dr. Marcel Hamberg**, and her son, **Mark**.

*Submitted by T. Mark Hodges*



## Chapter Council News

In case you didn't see the message on SOCHAP-L the Southern Chapter has won the Majors/MLA Chapter Project of the Year award for the Martha Watkins Scholarship project. This is really a wonderful tribute to Martha and an honor for the Chapter. Congratulations to everyone involved (I feel that includes almost all of us) and a special "Thank You" to Jan LaBeause for submitting the application for the award.

We do hope that you are planning to participate in the Chapter Sharing Roundtables at MLA. This event, which is sponsored by Chapter Council, offers a great opportunity for networking and sharing with fellow librarians. Each roundtable will have a facilitator to keep the discussion moving and a recorder to document the ideas shared. The Roundtables will take place on Sunday, May 27<sup>th</sup>, 2001 from noon until 2:00 p.m. The cost is \$25.00 and includes a hot pasta lunch, salad and dessert. The topics discussed are widely varied. About half are intended for chapter officers and committee chairs or people interested in filling those roles. The remainder should be of interest to everyone. Chapter Council selects topics based on the expressed interests of the membership of MLA. There are a total of 21 topics for 2001 and if you can't decide on the one you need you can participate in the "You Pick the Topic" table. Definitely something for everybody!

At MLA 2002 in Dallas the first David A Kronick Traveling Fellowship will be awarded. This is a new MLA fellowship grant awarding a sum of \$2,000 each year. The money is to be used to cover the expenses involved in traveling to three or more medical libraries in the United States or Canada for the purpose of studying a specific aspect of health information management. You can download a PDF version of the application from MLANET or contact Anne Greenspan at 312-419-9094 ext. 28 for more information.

You will also find information on MLANET about MLA's new continuing education credential program, the MLA Consumer Health Information Specialist Credential. Announced earlier this year, the goal of the program is to help librarians stay abreast of the latest consumer health information and to obtain an additional level of professional expertise. Detailed information about the program, including credential levels, applications and a downloadable brochure is available at: <http://www.mlanet.org/education/chc/>

And speaking of consumer health, MLA BibKit #7, *Consumer Health: A guide to Internet Information Resources* is now available. Written by Cecilia Durkin, it comes with a bookmarked disk that will take you directly to the websites listed in the bibliography. Again, go to MLANET for ordering information. The member price is only \$45.00.

At the February MLA Board meeting a motion was passed to change the name of the *Bulletin of the Medical Library Association* to *Journal of the Medical Library Association*. The majority of members who responded to the survey in MLA News were in favor of a change. The task force assigned to explore this issue felt that the new name sounds more like a scholarly, substantive journal and the Board members agreed.

We hope that everyone is going to make it to the Magic Kingdom in May. See you there!

Sarah Gable, Chapter Council Representative  
Jan LaBeause, Chapter Council Alternate



# ***Benchmarking Project***

## **MLA Benchmarking Project SOUTHERN CHAPTER EXCELLS ONCE AGAIN!**

It is so exciting to be part of the Southern Chapter! You all are just the BEST! Not only is Southern Chapter receiving the Chapter of Year Award once again, but it also excelled with the most number of **Benchmarking Beta Participants! Thank You!!**

As most of you have probably already read in the March 2001 (Number 334) MLA News, (pgs. 9-10) the Southern Chapter had 23 Benchmarking Beta participants, which is more than any other Chapter. The Midwest Chapter with 17 participants was the closest runner-up. Please accept my many thanks to each of you who entered your data!

In addition to our winning number of participants, **Cecelia Delbridge**, AHIP, J. Hudson Health Sciences Library, Mississippi Baptist Health Systems, Jackson, MS, was the winner of the Benchmarking Beta drawing for a copy of the new *MLA Guide to Managing Health Sciences Libraries*. The book drawing was an incentive to get hospital librarians to enter their data and test the data entry system. Congratulations, Cecelia!

So, what happens next?

The Taskforce has asked the Benchmarking Chapter Educators to survey the Chapter members to learn why people did and didn't participate in the Beta. In response to this request, a questionnaire will be placed on the SOCHAP listserv so that each of **YOU** can easily express your opinion and give your comments. The following is the suggested survey, which the Chapter can modify to meet its own needs:

### **Some reasons for NOT participating in the Benchmarking Beta:**

- ( ) didn't know about Benchmarking Network and Beta test
- ( ) didn't have time
- ( ) didn't have/couldn't get data that was requested in Beta test
- ( ) wasn't a MLA member (couldn't access restricted member's only area)
- ( ) don't think that statistical/benchmarking information is important
- ( ) Other: Please specify:\_\_\_\_\_

### **Some suggested reasons FOR participating in the Benchmarking Beta:**

- ( ) want to use statistical/benchmarking data in the future to enhance the position of my library
- ( ) want to contribute to the profession
- ( ) want to learn from the questions - how to construct my own survey
- ( ) Other: Please specify:\_\_\_\_\_

Please be watching for this survey on SOCHAP, so that you can provide me with the information needed.

In a report to Benchmarking Chapter Educators from the Benchmarking Taskforce, the following information was presented:

### *Progress to Date*

- The Beta test has been successfully completed for the Benchmarking Network with 84 participants and 77 completed data records.

(continued on p.16)

## Around the South

### Alabama and Georgia Health Libraries Associations Hold Joint Meeting

The Alabama Health Libraries Association and the Georgia Health Sciences Library Association held a joint meeting March 14-16, 2001 at the Columbus Hilton in Columbus, GA.

**Cathy Woolbright**, GHSLA

Vice-President/President-Elect and **Marian Morris**, ALHeLA President-elect served as Co-Chairs of the Program Committee. Other Committee Members were **Paula Christian, Fay Evatt, Mary Fielder, Pat Higginbottom, Jan LaBeause, Susan Leik, Beth Poisson, Pamela Queen, Lynette Ralph, Lisa Rains Russell, Mike Shadix and Susan Williams**.



*State Health Associations Presidents  
Carolyn Brown and Susan Williams*

and benefits of outreach.

Following a buffet lunch, **Helen Reinking**, Physical Therapist, gave the attendees some good ideas for Deskercise exercises we can do at our desk to keep our

joints and muscles loose and flexible.

The afternoon session was a panel discussion on "Librarianship Outside the Box: Outreach Projects in Alabama and Georgia. **Lee McCarley** led the discussion and the following librarians were panelists: **Judy Burnham** - discussed SOUTHmed Information Network, a fee-based outreach program offered by the USA Biomedical Library;

**Rosalind Lett** - discussed the NLM subcontract which partners Emory Health Sciences Center Library, Crawford Long Medical Library, Southwest Regional Library (a branch of the Atlanta-Fulton Public Library) and Cascade United Methodist Church. The project is entitled *Access to Electronic Health Information for the Public*;

**John Roy** - discussed his outreach activities as an AHEC librarian at the Blue Ridge AHEC;

**Kay Hogan Smith** - discussed Health InfoNet of Jefferson County, the consumer health information service of the Jefferson County Public Libraries and UAB Lister Hill Library;

**Rita Smith** - discussed the Rural Health Information Clearinghouse, which provides information to health care planners and providers as well as others interested in Georgia rural health care delivery system issues.



Jay Harris, Tracy Powell, C.J. Bryant

On Wednesday evening, meeting attendees were able to renew friendships at a reception at the Springer Opera House. After the reception, several enjoyed the play, "The Phantom".

On Thursday morning, the state associations held their individual business meetings. Later that morning, **Jocelyn Rankin** presented the Miriam Libbey lecture "Libraries Reaching Out: Lifeline to our States and the World". Dr. Rankin highlighted the history of outreach by medical librarians in Alabama and Georgia. She included several pictures in her presentation that brought back memories of past activities. She also outlined some criteria for successful outreach



Rankin

Later in the afternoon, **Bryan Vogh** gave an NLM update and **Sandra Franklin** was available to meet with those who had AHIP questions. Bryan outlined some of the Consumer Health activities of the SE/A NN/LM. He also noted that *SEA Currents* will only be available online starting with v.19, no.3. They are investigating ways to notify readers of publication. SE/A NN/LM has submitted a contract

*(continued on p.15)*

## *Around the South*

### **News from the University of South Carolina School of Medicine Library**

Planning is underway for the Library's second floor renovation which will include the creation of four group-study rooms for problem-based learning sessions, addition of more study carrels, new carpeting, lights and ceiling, refinished shelving, and a new rare book/history of medicine room. Work will begin in early summer.

The Library hosted an all day continuing education/training session on "Using the New DOCLINE" on February 7, 2001. The program was initiated and facilitated by **Karen Rosati** and **Annie Potter**.

**Beth Wescott**, NN/LM SE/A, served as instructor. 25 medical librarians from South Carolina were in attendance.

The USC School of Medicine Library and USC's Thomas Cooper Library, along with libraries at the Medical University of South Carolina, Clemson, The Citadel, The College of Charleston, Francis Marion University, Wofford University, and Presbyterian University have entered into an agreement that will provide our users with access to Science Direct.

The Library hosted a visit to the School of Medicine for **Janice Kelley**, Executive Director, NN/LM SE/A in January. Janice provided the Library staff with an excellent overview of the services provided by the NN/LM SE/A. She also visited the Palmetto Richland Memorial Hospital Library while in Columbia.

**Sarah Gable** was quoted in the local newspaper, The State, in the article "*The Web: Food for Thought, Not Senses.*"

**Karen Rosati** attended the 20th Annual Charleston Conference on Book and Serial Issues.

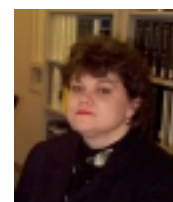
**Sarah Gable**, **Victor Jenkinson**, and **Ruth Riley** attended the NCBI workshop "Molecular Biology Information Resources" at the Medical University of South Carolina Library.

*Submitted by Ruth Riley*

### **News from Alabama**

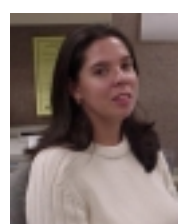
**Dr. Bob Schrimsher**, Pharmacy Librarian, Samford University, Birmingham, AL, has been appointed to the editorial board of the Drug Information Journal, effective January 2001. Dr Schrimsher is the only known librarian to be appointed to this journal's editorial board, which has a circulation of over 24,000.

Lister Hill Library at the University of Alabama at Birmingham is pleased to announce the appointment of **Jodi Upton**. Jodi has joined the faculty in the Information and Instructional Services Department as Outreach Coordinator. Her previous experience has been as a paraprofessional in an academic library, solo librarian in a hospital library and director of a public library system. Jodi received her MLS from the University of Alabama in 1993.



Upton

**Jan Burns**, Administrative Librarian at the Birmingham VA Medical Center, has been invited to give an overview of her experience with virtual libraries to the FEDLINK (federal librarians) group. The presentation will be held on May 8th at The Library of Congress. The topic of discussion will be the transition from traditional library formats to digital/electronic formats with an emphasis on document delivery to the users desktop.



Jasper

**Jana Jasper** has joined the faculty of the University of South Alabama Baugh Biomedical Library as Acquisition/Collection Development Librarian. Jana received her BS and MLS from the University of Southern Mississippi.

**Jie Li**, Information Services Librarian, Medical Center Library, University of South Alabama, has been appointed International Editor of MLA News. She will start her appointment in April.

*Submitted by Judy Burnham*

## Continuing Education Committee

### CE Update

#### Southern Chapter

*2001  
New Orleans*

*Tri-Chapter  
Meeting*

*October 24th-30th*

**\$ \$ \$ \$ \$**

**\$ Special deal for SC/MLA  
attendees**

**\$ \$30 discounted combina-  
tion registraion/CE  
package**

**\$ Over 20 classes from  
which to choose**

**CE Days**

**Oct. 24th, 25th,  
28th**

If you are planning to take a CE class anytime soon, have we got a deal for you at the Triple Chapter conference in New Orleans! Not only will you have a choice of more than 20 classes, the SC Executive Board has approved a motion that will provide a discounted combination registration/CE package for SC/MLA attendees.

This “combo” registration package will provide a discount of \$30 for each full conference registration in combination with one Continuing Education class. For the Triple Chapter conference in 2001, the SC/MLA will, from its treasury, reimburse the Conference Treasury an amount equal to total discount granted to SC/MLA members.

The “combo” registration package is meant to encourage attendance, support individual professional development, and give back to the membership from our treasury. After the vote, Tom Singarella said, “This is truly a value-added benefit for SC/MLA members, and what better venue to meet than New Orleans with two other associations?”

The Professional Development Committees from Midcontinental, Southern and South Central Chapters are investigating more than 50 potential courses, 29 of which are a direct result of Southern Chapter ideas and suggestions. The CE committees are currently organizing these courses according to topic, length, format, cost and date to develop a list of about 20 classes on topics that include communication, electronic issues, history of the health sciences, library services, management and leadership, personal development and research.

Mark your calendars for a class on one of three CE days: Wednesday (October 24) Thursday morning (October 25) or Sunday (October 28).

### CE Planning Timeline

**April 15** - Select CE courses and have a verbal/e-mail agreement with the all instructors except the NN/LM staff. New contracts will be awarded in all NN/LM regions on April 30.

**April 23** - Send a letter of intent with the basic terms for the instructors to sign and return.

**May 1** - Applications/renewals for MLA CE credit and then post in the Clearinghouse.

**May 2** - Select NN/LM courses as soon as the new contracts are awarded.

**June 15**- Send camera-ready copy on CE courses to publications committee.

*Submitted by Rebecca Fehrenbach, Chair  
SC/MLA Professional Development*

## *Research Spotlight*

### **The Research Committee offers ANNUAL RESEARCH GRANT \$1000**

#### **Southern Chapter Research Committee Annual Research Grant**

The SC/MLA Research Committee is offering \$1000 to support one or more members' research projects. Application forms are available at <http://www.uab.edu/lister/scmla/resgrant.htm> or from the Research Committee's Chair. The deadline for applications is October 1st, 2001. For questions or to submit completed application, please contact:

Helvi McCall, Chair, SC/MLA Research Committee  
Rowland Medical Library  
University of Mississippi Medical Center  
2500 N. State Street  
Jackson, MS 39047-7999  
E-mail: [hmccall@rowland.umsmed.edu](mailto:hmccall@rowland.umsmed.edu)  
Tel: 601-984-1238

#### **Activities of the Research Committee:**

In support of the SC/MLA strategic plan, the Research Committee is charged to:

- Stimulate research activities within Southern Chapter membership.
- Communicate the results of research performed by SC membership or the Committee.
- Promote the education of the chapter membership in research methodologies.
- Promote MLA's Platform for Change.

#### **Membership:**

Helvi McCall, Chair of the Research Committee [hmccall@rowland.umsmed.edu](mailto:hmccall@rowland.umsmed.edu)  
Jennifer Lyon [jennifer.lyon@mcmail.vanderbilt.edu](mailto:jennifer.lyon@mcmail.vanderbilt.edu)  
Steven MacCall, PhD. [smaccall@bama.ua.edu](mailto:smaccall@bama.ua.edu)  
Robert Poyer [pyerrk@musc.edu](mailto:pyerrk@musc.edu)  
Cathy Schell, MD. [mdsoftware@earthlink.net](mailto:mdsoftware@earthlink.net)  
Addajane Wallace [addajane.wallace@hmc.halifax.org](mailto:addajane.wallace@hmc.halifax.org)

Ex Officio Members:

Cheryl Dee

Jocelyn Rankin

*(continued on p.14)*

## *Research Spotlight*

*continued from p. 13*

### **RESEARCH RESOURCES:**

There is no need to re-invent the wheel. Sometimes, a brief discussion with a colleague can make your job easier or solve a problem. The Research Committee maintains a listing of research mentors drawn from the SC membership. This is not available as yet on the SC web page. Please contact the Chair of the Research Committee for contact information on mentors or any other research issue. Also, the MLA Research Section maintains a web site at <http://research.mlanet.org> with information on mentors, resources, grants and more.

### **AN INVITATION TO PARTICIPATE:**

- The Research Committee would like to hear from you about your research learning needs. Also suggestions for Continuing Education topics or speakers that you would like to have featured at our Annual Meeting are welcome.
- Please communicate your research projects so that networking can take place with other Southern Chapter members. The Committee does not publicize a project without the permission of the researchers. A “Spotlight” feature provides visibility to a project within the library community and in the long run may help facilitate publication in a national publication. If your project was recently published, the Committee would still like to hear from you as many local or state publications do not reach all the membership of the Southern Chapter.
- The Research Committee is available to facilitate Chapter-wide research projects.

*Submitted by Helvi McCall*

## *Annual Meeting 2000*

### *Final Tally*

After the final tally, and with an express goal of “not making any money (also not losing much)” which would have told us our members got charged too much, and with nearly \$60,000 income, we virtually broke even having “lost” a total of \$84.56.

With 236 registrants, this was the second highest in our history, second only to the Atlanta meeting some years ago. With 187 people at the banquet, this was one of the largest numbers as well for this function. The mansion where we held the dinner had never had more than 100 for a sit-down dinner. About 100 people participated in CE courses.

*Submitted by Tom Williams*



## *Around the South* *continued from p.10*

proposal to continue serving as Regional Medical Library. As soon as it has been accepted, details will be released. Bryan also noted that he is available for technology related talks, i.e., electronic document delivery. **Jana Allcock** has developed a 4-6 hour consumer health class and a Consumer Health Web Manual is available. Bryan noted that all institutions need to be sure their Docuser record is updated and he highlighted some of the recent developments in PubMed, MedlinePlus and the NLM Gateway.



Linda Garr, Magician, Nancy Clemmons, Lynn Fortney,  
Pat Higginbottom

At the banquet Thursday evening, everyone was amazed by the tricks of the magician. Be sure and ask **Linda Markwell, Nancy Clemmons and Lynn Fortney** about the yellow balls that kept reproducing!



Magician and Lee McCarley

The meeting concluded Friday morning with the following CE classes: "Bringing Your Library's Resources to the Web" taught by **Chandra Alston** and "SuperSearcher" taught by **Bryan Vogh**.

*Submitted by Judy Burnham*

### **OCLC Workshops at CMB Biomedical Library University of South Alabama**

#### ***SOLINET Workshops*** **The Successful Searcher** June 6th, 2001 **ILL for New & Selective Users**

June 7th, 2001

**Charles M. Baugh**  
**Biomedical Library**  
**University of South Alabama**

Charles M. Baugh Biomedical Library will host two all day SOLINET workshops in early June: "The Successful Searcher" on June 6<sup>th</sup> and "ILL for New & Selective Users" on June 7<sup>th</sup>.

The "Successful Searcher" will teach OCLC searchers how to minimize the number of searches while maximizing the results. Topics covered include keyword searching, derived and numeric search keys, navigating screen displays, searching hints and tricks, and more. Great for those with little OCLC search experience or those who need a refresher.

"ILL for New & Selective Users" will focus on OCLC's PRISM Interlibrary Loan Service. Previous attendance at "The Successful Searcher" is required. This workshop covers no searching. Aimed at those with limited OCLC PRISM experience, it covers topics like Passport software, searching the Name-Address Directory, and Union List subsystems among others.

Both workshops provide hands-on training and will be held in the COM lab on the second floor of the library. For more information about the workshops, registration and pricing, visit SOLINET's web page at <http://www.solinet.net/cet/reginfo.htm> or call Ellen Sayed at (334)460-7850. Directions to CMB Biomedical Library, can be found at <http://southmed.usouthal.edu/library/directions.htm>.

*Submitted by Ellen Sayed*



## ***Benchmarking Project***

*continued from p.9*

- Tentative models for Benchmarking Network participation and access continue to be explored.
- The Content Team is analyzing the beta results looking for flaws in the instrument.
- A newly formed Outcomes Team is discussing their responsibilities and determining their timelines.
- The MLA staff (especially Kate Corcoran) are developing a sample statistical aggregate for evaluation in Orlando.

### *The Visible Future*

- Benchmarking Chapter Educators will be administering questionnaires and analyzing why people did and did not participate in the Beta. In Orlando, they will be discussing this and developing strategies.
- Results of Content Team deliberations and recommendations will be presented to the Taskforce in Orlando.
- Clearly defining outcome products (e.g. basic aggregate statistical data, enhanced report features, educational materials and value indicators, etc.), assessing their value and developing a final model for access and pricing for the MLA Board of Directors to review.
- The Outcome Team will select elements for correlation and develop an approach to other outcome measures (especially those recommended in MLA commissioned Value of Information Study) by September 1<sup>st</sup>.
- Strategies for Chapter meetings will be developed in Orlando.

The MLA Benchmarking Taskforce also approached the Hospital Libraries Section for input about “where to go with the Benchmarking Project”, according to Michael Kronenfeld in the HLS Announce, the email communication tool utilized by the Section. Benchmarking will also be the topic of the Chair’s column in the upcoming *National Network*, the newsletter for the Hospital Libraries Section. As Michael stated in the HLS Announce, “This is the opportunity for HLS and its members to take a lead role in supporting this project and insuring its success - the ball is in our court.”

The Task Force seems to be reaching out to Chapters and the Hospital Libraries Section for input about the Benchmarking Project. Your Southern Chapter Benchmarking Educator will continue to pursue an answer from MLA to the very important question which was asked last Fall but has never been answered. What opportunities will personal or individual MLA members have to participate in the benchmarking project, since the project was designed to be a benefit of institutional membership? The only answer received to date is the same one as received last fall: “MLA does not yet know what access personal MLA members will have to the benchmarking data. There is no benchmarking product yet, so no decisions yet. This does NOT mean that MLA will not allow individual or personal members to have full access, it just means that MLA does not have any details YET about how it will work.” As Susan Long stated in the *National Network* (January 2001, v. 25, no. 3, pg. 10), “...it would be premature for anyone to begin changing his membership from individual to institutional solely on the basis of future participation in the benchmarking project”.

Thanks again to all of you Southern Chapter members who entered your library’s data!

*Submitted by Linda Garr Markwell*  
*Southern Chapter Benchmarking Educator*

## *MLA 2001 Orlando*



Hello MLA 2001  
Attendees!

The Local Assistance Committee has a webpage up to provide more information about the Orlando meeting. You can view it at <http://www.library.health.ufl.edu/MLA2001/index.html>.

On that page, please take note of the Hospitality Committee's FAQ section with information about Orlando, Disney, transportation, etc.

The Hospitality Committee will also be posting a "Fact a Day" on the MLA 2001 discussion list. To subscribe to the list, send a message to "Majordomo@mlahq.org" and in the text of the message, type "Subscribe mla-2001am@mlahq.org".

Thank you and hope to see you there!

MLA 2001 Hospitality Committee

### **Volunteers Needed!!**

The Local Assistance Committee for the MLA 2001 Annual Meeting in Orlando needs your help. We are staffing the hospitality booth at the MLA Orlando meeting and need volunteers for staff time.

If you can donate a one hour block of time, please register by going to:

<http://www.library.health.ufl.edu/MLA2001/mlahos.htm>

You may register for more than one time slot, as we need 2-3 persons during each one hour block.

For every four hours worked, MLA members earn AHIP points. For every four hours worked, non-members receive one day of free registration, to be used on the day of their choice.

Pam Neumann, Director, Borland Library  
University of Florida Health Science Center, Jacksonville  
P.O. Box 44226, Jacksonville, FL 32231-4226  
904-244-3240 Fax: 904-355-3310 [pneumann@ufl.edu](mailto:pneumann@ufl.edu)

## *Announcements*

### **Poster and Paper Abstracts Deadlines Extended SC/MLA 2001 Tri-Chapter Meeting**

The submission deadline for poster abstracts and paper abstracts for the Triple Chapter (MC, SC, SCC/MLA) meeting has been extended to **July 1, 2001**. We have space for 32 more posters. The submissions for posters has been good, but I would like to see many more submitted. Thank you to everyone who has already submitted an abstract. No one from the Mid Continental Chapter has submitted an abstract so far. Here is your chance to represent your chapter and enjoy the conference and New Orleans.

If you have been waiting to hear how much the conference will cost before making a decision, the conference registration will be in the range of \$150-165. More information on registration, hotel, restaurants, and tours can be found at <http://www.sccmla.org/mtg.html>

Your poster abstract submission will be acknowledged by a message that it was received. If you do not get this message, then for some reason, your message was not received and you should try again.

Submit paper abstracts to: Jon Eldredge, Contributed Papers, Chair, Email: [jeldredge@salud.unm.edu](mailto:jeldredge@salud.unm.edu) Mail: UNM Health Sciences Center Library, Albuquerque, NM 87131-5686 Phone no.: 505-272-0654 Fax: 505-272-5350

Submit poster abstracts to: Alice Burnett, Posters, Chair, Email: [aburne@lsuhsc.edu](mailto:aburne@lsuhsc.edu) Mail: LSUHSC Library 1501 Kings Hwy. P.O. Box 33932 Shreveport, LA 71130-3932 Phone no: 318-675-5458 Fax: 318-675-5442

*Submitted by Alice Burnett*

### **Education Librarian Position Medical Library and Peyton Anderson Learning Resources Center Mercer University School of Medicine**

Medical Library and Peyton Anderson Learning Resources Center at Mercer University School of Medicine seeks an education librarian to provide instructional services and end-user training for Library, LRC and GaIN (Georgia Interactive Network for Medical Information). Position also has outreach and general reference duties. Some evening and weekend hours, and some travel required.

Required: ALA-accredited masters in library science; teaching experience; hands-on computer, Internet and database searching experience; excellent oral and written communication skills.

Preferred: AHIP membership; Web page development skills, reference and bibliographic instruction background, and a strong science background.

Salary: Faculty appointment with full benefits and responsibilities; AA/EOE/ADA; salary based on qualifications and experience. Minimum: \$30,000.

Applications accepted until position is filled. Send letter, resume, and names of three references to:

Jan LaBeause,  
Director, Medical Library and LRC,  
Mercer University School of Medicine,  
1550 College Street,  
Macon, GA 31207.

*Submitted by Jan LaBeause*

## *Around the South*

### News from the University of Florida Health Science Center Libraries

#### News from the Field

The Medical Library Association is holding their annual meeting in Orlando, Florida from May 25-30, 2001 at the Dolphin Hotel at Walt Disney World. The HSC Libraries' Director, **Faith Meakin**, is the Chair of the Local Arrangements Committee. We would like to recruit volunteers to assist with the meeting activities. Non-MLA members who volunteer at least 4 hours of work to the conference will receive 1-day free registration to the conference. Volunteers are needed to staff the Hospitality desk, the placement center and member resource room. We also need volunteers to stuff the conference portfolios on Thursday May 24 at the Dolphin. If interested please contact Faith A. Meakin via email at [Faith@health.ufl.edu](mailto:Faith@health.ufl.edu). For more information about the meeting please see <http://www.mlanet.org/am/am2001/program/index.html>

Reference Librarian **Pamela Sherwill** will be attending "Finding the Best Resources to Answer Nursing Questions," by **Peg Allen** at the Metropolitan New York Library Council on March 23.

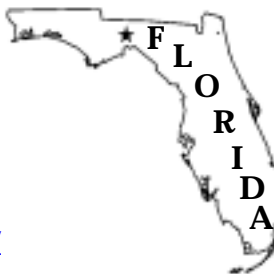
#### People/Publications

Reference Librarian **Michele Tennant** has recently published two new articles and has received national media coverage for her recent Science publication:

Liu, R.F.G., M.M. Miyamoto, N.P. Freire, P. Ong, M.R. Tennant, T.S. Young, and K.F. Gugel. "Molecular and Morphological Supertrees for Eutherian (Placental) Mammals." *Science*, Mar.2, 2001, 291(5509): 1786-1789.

Tennant, M.R., M.E. Rezeau, P. Tucker, L.C. Butson, M. Boyle, and G. Clayton. "Customizing for Clients: Developing a Library Liaison Program from Need to Plan." *Bull. Med. Libr. Assoc.*, Jan. 2001, 89(1):8-20.

Reference Librarian **Nancy Schaefer** recently published an annotated "webliography" entitled "Selected Public Health Information Websites" in the *MLA Public Services Section Newsletter* (December, 2000) and the *MLA Public Health/ Health Administration's PH/ HA News Winter/Spring 2001*. The latter also contained an article Nancy wrote, "Recapping APHA's 128th Annual Meeting in Boston, November 11-16, 2000 Librarians and Public Health: A Natural Synergy." Congratulations to Nancy!



Reference Librarian **PiYung (Peggy) Hsu** recently published a resource for Alzheimer's disease: P. Peggy Hsu. Alzheimer's disease: Internet resources for consumers. *Health Care on the Internet* 2000 4(4): 1-14.

**Susan McCullough**, education coordinator at the Borland Health Sciences Library at the University of Florida, Jacksonville, presented a poster at the Association of College & Research Libraries' (ACRL) 10<sup>th</sup> National Conference in Denver on March 17<sup>th</sup>. The poster, "PubMed Tutorial On The Web: Teaching MEDLINE from a Distance", was co-authored by **Tara Tobin** and **Barbara Francis**, both of the HSC Libraries in Gainesville.

#### People/Departures

**Barbara Francis**, Coordinator of Educational Activities and also acting Assistant Director of Reference, is now enjoying phased retirement. She and her husband **Wayne**, a political science professor at the University of Florida, are off until August and will continue to work fall semesters for the next three years. Barbara is continuing her professional activities in the Medical Library Association where she is a representative to Section Council, is on the Continuing Education Committee, and is on the Hospitality Committee for MLA's annual meeting in Orlando, May 2001.

*(continued on p.22)*

## *Hospital Libraries Committee*

### **MLA Orlando**

**Hospital Library  
Section Connection  
Reception**

**Monday Evening  
5:45 pm -7:00 pm**

While you're in Orlando, stop by the MLA/Hospital Library Section Connection Reception Monday evening to meet your leaders, visit with colleagues and enjoy free food. CE of particular interest to hospital librarians: Business Case (**Ros Lett**), Joint Commission Standards (**Janet Cowen**), Benchmarking (**Jacque Doyle** and **Bernie Smith**), Teaching Internet Consumer Health to Health Care Professionals (**Kay Deeney**). The Saturday symposium entitled "Leveraging the Web: Providing Innovative Health Information Service" provides a combination of hands on and lecture experiences at basic and advanced levels.

Looking ahead to the Tri-Chapter meeting in New Orleans, we are working jointly on the Hospital Library luncheon and program. Now is a good time to apply for the Martha Watkins Scholarship to help fund CE at this meeting. [www.lhl.uab.edu/lister/scmla/mom.htm](http://www.lhl.uab.edu/lister/scmla/mom.htm)

Nominations are also being accepted for our chapter's Hospital Librarian of the Year award. [www.lhl.uab.edu/lister/scmla/hospawa.htm](http://www.lhl.uab.edu/lister/scmla/hospawa.htm) Think about who you know....then ACT on it!

Interlibrary Loan update: **Deb Lawless**, St. Vincents, Jacksonville, FL, is scanning articles into pdf format using Adobe Acrobat 4.0. She then sends the pdf file to the requesting library as an email attachment. For additional information, contact Deb at [dlawl.1001@bsvhs.net](mailto:dlawl.1001@bsvhs.net).

MEDLINEplus gets better and better. The revised [March, 2001] trifold brochure is available at <http://www.nlm.nih.gov>

Mary Fran Prottzman, Chair, Hospital Libraries Committee

### **NOMINATE THE 2001 HOSPITAL LIBRARIAN OF THE YEAR**

Recognize a hospital librarian who exemplifies excellence, promotes leadership, and pursues continued high levels of achievement in the field of library science.

Nominee must be a member of MLA and SC/MLA, currently be a hospital librarian, and have worked in a hospital library for at least five years immediately preceding the award.

### **Martha C. Watkins Scholarship**

Applicants must be current Southern Chapter members, who work in a hospital library and who want to take a course or workshop at the Southern Chapter annual meeting.

The amount awarded will not exceed \$150.00 and can be used to defray any expenses necessary for the fulfillment of the course.

## *Around the South*

### News from Mississippi

A pilot study of the new wireless LAN is being conducted in the Rowland Medical Library of University of Mississippi Medical Center. The goal of this project is for UMMC to install a wireless network with communication between UMMC, VA and the medical tower. Currently, users can check out laptop computers at the Circulation Desk, and use the computer anywhere in the library to access e-mail and the Internet. Feedback from the users is positive, because it gives them more flexibility and privacy than those of fixed workstations.

**Rama Vishwanatham** (AHIP, M.L.I.S., M.A), began working in the Rowland Medical Library at the University of Mississippi Medical Center Dec 29, 2000 as Librarian, Outreach Services. She was employed as the Technology Consultant with the Mississippi Library Commission prior to joining the Rowland Medical Library. Prior to that she worked as the Assistant Reference Librarian with the Library of the Health Sciences at the University of Illinois at Chicago for more than five years. She holds a M.L.I.S degree from the University of Texas at Austin. She has been actively involved in the Medical Library Association and served as Chair of the Membership Committee, Medical Informatics Section (1999-2000). She has also been an active member of the American Library Association.

**Sarah Adcock** and **Gongchao Yang** at Rowland Medical Library attended a training session on Mississippi Hospital Law Manual Online, sponsored by Mississippi Hospital Association. The online version provides instant updates and easy access to the contents of the manual via the Internet.

Rowland Medical Library celebrated National Library Week from April 2<sup>nd</sup> to 6<sup>th</sup> with a used book sale, silent auction, raffle and the eighth Dean Billy S. Guyton History of Medicine Lecture. This year, the lecture "A Brief Historical Perspective of Dentistry" was given by a noted dental historian, **Dr. Andrew**

**Christopher** of Georgetown University College of Dental Surgery on April 5th.

### **Consumer Health Education Center (CHEC) University of Mississippi Medical Center Rowland Medical Library**

The University Hospitals and Clinics and the Rowland Medical Library at the University of Mississippi Medical Center have initiated a joint effort to develop a community-based health information facility located in the Jackson Medical Mall which houses all of the teaching clinics for the Medical Center. The CHEC facility at the Jackson Medical Mall is scheduled to open in late March 2001. CHEC is funded by the National Network of Libraries of Medicine, Southeastern/Atlantic Region of the National Library of Medicine, under a \$40,000 sub-contract for an Access to Electronic Health Information for the Public project.

CHEC is a model interactive educational resource center to meet the health information needs of the patients, caregivers and the surrounding Jackson metropolitan community. It will be a complement to the patient education services provided by health care professionals to the patients at these clinics. CHEC will increase the role of the health care providers in educating their patients by providing health information that the consumer is seeking, thus increasing compliance and helping patients become better partners in their own care. CHEC will also allow health professionals and students to access information and actively engage in patient education activities in a preceptorship ambulatory setting.

The center will have ready and easy access to a comprehensive collection of health information through numerous consumer health books, videos and pamphlets from different healthcare associations and organizations. The facility will provide consumers

(continued on p.22) 21

## *Around the South continued from p.21*

### **News from Mississippi**

(continued)

privacy to seek information and to read it while providing a safe, convenient, centralized site in pleasant surroundings. CHEC will also provide access to computers with Internet connections to access quality health information sources on the Internet. To further that end, the CHEC web site, developed by **Walter Morton**, associate professor of academic information services, provides access to health information including numerous Mississippi health resources and Mississippi health topics to patients statewide. Professional staff and trained volunteers at the center will provide expertise to assist the public and health professionals in meeting their health information needs.

CHEC will also establish branch sites at the UMC health care facilities in Lexington and Durant. Public librarians at the Jackson Hinds Library System and in Durant and West (of the Mid-Mississippi Regional Library System) will be trained to use the CHEC web site and donated materials to better assist the community access consumer health information. Ms. **Rama Vishwanatham**, AHIP, M.L.I.S., M.A is the CHEC project librarian and will manage the CHEC centers. She is also responsible for the training of the CHEC volunteers, public librarians and health care providers in the Medical Mall and health professional students about CHEC information services and the availability and use of quality health information on the Internet through the CHEC web site.

*Submitted by Gongchao Yang*

## *Around the South continued from p.19*

### **News from the University of Florida Health Science Center Libraries**

(continued)

#### **People/Appointments**

**Faith Meakin**, Director of the Health Science Center Libraries, was recently elected to the MLA Nominating Committee. Congratulations on your nomination!

#### **People/Awards**

Congratulations to **Sandra Canham**, Reference Librarian at the Borland Health Sciences Library at the University of Florida, Jacksonville. Sandra has been accepted for membership into the Academic Health Information Professionals (AHIP) organization at the Provisional Member level. Way to go Sandra!

*Submitted by Rae Jesano*

### **Health Professions Library Nova Southeastern University Fort Lauderdale, Florida**

The Health Professions Division Library at Nova Southeastern University in Fort Lauderdale, Florida, recently completed a renovation project which provided more shelving space for books and journals, enhanced the quiet study atmosphere of the library and converted space for a computer minilab for small group instruction. Within a two month period over 1100 feet of additional shelving was added to house the ever-growing number of bound volumes of more than 1400 medical journals, and the stacks were reconfigured to make the best use of the existing space. The copy room was enlarged to accommodate seven new copiers, and the entrance doors were converted to automatic opening to reduce the noise level in the library. Two small study rooms were combined to form a computer lab with twelve computers, projection unit and materials storage area. In addition, a new adjacent assembly building was completed which includes 26 additional study rooms which are under the auspices of the Health Professions Library. NSU students now have access to over 600 full-text electronic journals and more than 100 online books.

*Submitted by Janice Gottlieb*



## ***Announcements***

### ***Get Your Human Genome Project Kit***

In February 2001, the initial analysis of the genome sequence was published in the scientific literature. To mark this occasion, the Human Genome Project has released a free, multimedia educational kit for high school students and the interested public. The kit, called The Human Genome Project: Exploring our Molecular Selves, includes:

- \* a CD-ROM with seven varied segments
- \* an award-winning video documentary, The Secret of Our Lives
- \* a commemorative poster
- \* an informational brochure, Genetics: The Future of Medicine

Enter, click, and order, for free:

<http://www.nhgri.nih.gov/educationkit/form.html>

This limited edition multimedia educational tool on genomics and genetics is designed for high school students, teachers, and the general public.

*Produced by: National Human Genome Research Institute, National Institutes of Health, Office of Health and Environmental Research, U.S. Department of Energy, Howard Hughes Medical Institute, Pharmaceutical Research and Manufacturers of America, Nature and Science*

## ***Communications Committee***

### **Keep in Touch!**

**Communications Committee Chair: Cecelia Delbridge    [cdelbridge@mbmc.org](mailto:cdelbridge@mbmc.org)**

### **State Reporters**

Alabama	Judy Burnham	<a href="mailto:jburnham@jaguar1.usouthal.edu">jburnham@jaguar1.usouthal.edu</a>
Florida	Karen Roth	<a href="mailto:karen.roth@baycare.org">karen.roth@baycare.org</a>
Georgia	Lyn Dennison	<a href="mailto:ldenniso@mail.mcg.edu">ldenniso@mail.mcg.edu</a>
Mississippi	Gongchao Yang	<a href="mailto:gyang@rowland.umsmed.edu">gyang@rowland.umsmed.edu</a>
Virgin Islands	Carmen Santos	<a href="mailto:ca_santos@rcmaca.upr.clu.edu">ca_santos@rcmaca.upr.clu.edu</a>
South Carolina	Loretta Westcott	<a href="mailto:lwestcott@ghs.org">lwestcott@ghs.org</a>
Tennessee	Martha Earl	<a href="mailto:mearl@utk.edu">mearl@utk.edu</a>

### **Ex-Officio Members**

Ingrid Hendrix    Southern Expressions Co-Editor  
Sondra Pfeiffer    Southern Expressions Co-Editor  
Marian Morris    Membership Committee Chair

Linda Flavin    Membership Data Base Manager  
Pat Higginbottom    Web Site Coordinator  
Nelle Williams    SoChap-L Moderator

*Submitted by Cecelia Delbridge*



(C) Disney, Magic Kingdom (R)

*MLA 2001  
Orlando*



(C) Disney, Disney-MGM Studios



(C) Disney, Epcot (R)



(C) Disney, Disney's Animal Kingdom (R)

**“The Southern Chapter of the Medical Library Association has many, many members who contribute considerable amounts of time and energy to MLA. Since SC/MLA is the ‘host chapter’ for the Orlando meeting, we will be working overtime at MLA, but we’ll be having fun while we’re at it!”**

**Lynn Fortney  
Message from the Chair**

Photographs (C) *Disney* courtesy of Walt Disney World (R) Resort