

# Southern Expressions

Alabama

Georgia

Puerto Rico

Tennessee

Florida

Mississippi

South Carolina

Virgin Islands

Volume 17, Number 3,  
Summer 2001

## In This Issue:

Announcements.....	21
Annual Meetings.....	3,12,13
Around the South.....	4,6,10, 11,16,18,22,23
Benchmarking.....	9
Chapter Council News.....	8
Chapter Participation.....	17
Committee Reports.....	16,23
Job Announcements.....	6
Message from the Chair.....	1
Personals.....	7
Publication Schedule.....	below
Research Spotlight.....	14

## Southern Chapter

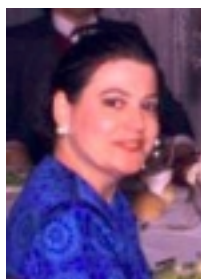
<http://www.uab.edu/lister/scmla>

**Next reporting deadline**  
August 15th, 2001

**Next Publication Date**  
September 15th, 2001

## Message from the Chair

Lynn Fortney



Fortney

**Southern Chapter is simply the BEST!** Not only do we have validation of that fact in our third Majors/MLA Chapter Project of the Year Award, while I was at MLA, people who do not live or work in Southern Chapter states remarked to me how active and visible SC/MLA

members are, how it is so “refreshing” to see how we support each other (that’s called “mentoring” of the best sort) and how they either a) never dropped their SC/MLA membership when they moved out of the area, or b) wondered if it would be possible to join. Now THAT’S a compliment!

I’ve been a member of SC/MLA for 26 years, but I’ve never really seen our chapter through the eyes of others until my term as your Chair. When you all stood up at the Welcome session at MLA, people noticed. When you all stood and cheered at the Honors and Awards Luncheon, people noticed. When our SC/MLA members win award after award, people notice. When people outside our chapter see our newsletter, they notice - our Spring issue was 24 pages full of information about what we’re doing. It’s especially impressive when measured against other chapters.

At the Chapter Sharing Roundtable luncheon, I was a recorder for a discussion amongst chairs of chapter and sections. One of the questions was “how do you get people involved and interested in volunteering?” Southern Chapter doesn’t seem to have a problem with this. Our membership is stable, maybe even up a bit. I have more volunteers for committees than we have spaces for. Sondra and Ingrid can put together a substantial publication because of all of your contributions. It’s my belief that all this activity generates new energy. Indeed, we had more interesting ideas discussed at the Executive Board meeting than we will have time to act on.

*(continued on p. 5)*

## **ELECTED OFFICIALS**

### Chair

Lynn Fortney  
EBSCO Information Services  
Birmingham, AL  
lynnf@ebSCO.com

### Chair-Elect/Program Chair

Janet Fisher  
Quillen College of Medicine Library  
East Tennessee State University  
Johnson City, TN  
fisherj@etsu.edu

### Secretary/Treasurer

Brenda Faye Green  
Health Sciences Library  
University of Tennessee Health Sciences  
Center  
Memphis, TN  
bfgreen@utmem1.utmem.edu

### Past Chair/Nominating Chair

Thomas Singarella  
Health Sciences Library  
University of Tennessee Memphis  
Memphis, TN  
tsingarella@utmem.edu

### MLA Nomin Comm Candidate

T. Scott Plutchak  
Lister Hill Library of the Health Sciences  
University of Alabama at Birmingham  
Birmingham, AL  
tscott@uab.edu

### Chapter Council Rep

Sarah Gable  
School of Medicine Library  
University of South Carolina  
Columbia, SC  
sarah@med.sc.edu

### Chapter Council Alternate 5/97-5/2000

Jan LaBeause  
Medicine Library/LRC  
Mercer University School of Medicine  
Macon, GA  
labeause.j@gain.mercer.edu

## **APPOINTED OFFICIALS**

### Archivist

Mary Lynch  
Health Sciences Center Library  
Emory University School of Medicine  
Atlanta, GA  
libmcl@emory.edu

### Bookkeeper

Marilee Creelan  
Greenblatt Library  
Medical College of Georgia  
Augusta, GA  
mcreelan@mail.mcg.edu

### Historian

T. Mark Hodges  
Nashville, TN  
tmhodges33@aol.com

### MLA Credentialing Liaison

Sandra Franklin  
Health Sciences Center Library  
Emory University School of Medicine  
Atlanta, GA  
librsf@emory.edu

### Membership Database Manager

Linda Flavin  
Birmingham, AL  
lflavin@aol.com

### Parliamentarian/Historian

Danny O'Neal  
Health Sciences Center Library  
University of South Florida  
Tampa, FL  
doneal@com1.med.usf.edu

### Southern Expressions Co-Editors

Ingrid Hendrix  
Health Sciences Center Library  
Emory University  
Atlanta, GA  
libich@emory.edu

### Sondra Pfeiffer

Lister Hill Library of the Health Sciences  
University of Alabama at Birmingham  
Birmingham, AL  
Sondra@uab.edu

### SoChap-L Moderator

Nelle Williams  
Health Sciences Library  
University of Alabama  
Tuscaloosa, AL  
nwilliam@cchs.ua.edu

### Web Site Coordinator

Pat Higginbottom  
Lister Hill Library of the Health  
Sciences  
University of Alabama at Birmingham  
Birmingham, AL  
phiggin@uab.edu

## **COMMITTEE CHAIRS**

### Bylaws

Lois Bellamy  
Health Sciences Library  
University of Tennessee, Memphis  
Memphis, TN  
lbellamy@utmem1.utmem.edu

### Communications

Cecelia Delbridge  
J Manning Hudson Health Science  
Library  
Baptist Health SYstems  
Jackson, MS  
cdelbridge@mbmc.org

### Governmental Relations

Connie Machado  
Rowland Medical Library  
University of Mississippi Medical Center  
Jackson, MS  
cmachado@rowland.umsmed.edu

### History of the Southern Chapter

Richard Nollan  
Health Sciences Library  
University of Tennessee, Memphis  
Memphis, TN  
rnollan@utmem1.utmem.edu

### Honors & Awards

Marcia Reinhardt  
Medical University of South Carolina  
Charleston, SC  
reinham@musC.edu

### Hospital Libraries

Mary Fran Prottzman  
US Army Aeromedical Center  
Fort Rucker, AL  
prott@entercomp.com

### Membership

Marian Morris  
McMahon Sibley Medical Library  
Princeton Baptist Medical Center  
Birmingham, AL  
marian.morris@bhsala.com

### Professional Development

Rebecca Fehrenback  
Greenblatt Library  
Medical College of Georgia  
Augusta, GA  
rfehrenb@mail.mcg.edu

### Research

Helvi McCall  
Rowland Medical Library  
University of Mississippi Medical Center  
Jackson, MS  
hmccall@rowland.umsmed.edu

### Strategic Planning

Rosalind Lett  
Emory Healthcare/Crawford Long Hospital  
Atlanta, GA  
rosalind\_lett@emory.org

## **Southern Expressions**

Newsletter of the Southern Chapter / Medical  
Library Association

is published quarterly by the Southern  
Chapter of the Medical Library  
Association, Inc., a 501c3 organization.  
Please send contributions to the editors:

Ingrid Hendrix  
Health Sciences Center Library  
Emory University School of Medicine  
1462 Clifton Rd.  
Atlanta, GA 30322  
Voice:404-727-5829  
Fax:404-727-8469  
libich@emory.edu

Sondra Pfeiffer  
Lister Hill Library  
University of Alabama at Birmingham  
1700 University Blvd.  
Birmingham, AL 35294-0013  
Voice:205-934-2230  
Fax: 205-975-8313  
Sondra@uab.edu

### **Content policy for Southern Expressions**

Statements and opinions expressed in  
Southern Expressions do not necessarily  
represent the official position of its co-  
editors or the Southern Chapter of the  
Medical Library Association. Contributions  
may be edited for brevity, clarity, or  
conformity to style. Final decision on the  
content of *Southern Expressions* shall be  
left to the discretion of the co-Editors with  
the advice of the Communications  
Committee of the Southern Chapter/  
Medical Library Association.

# MLA Tri-Chapter Meeting



MLA TRICHAPTER MEETING  
HILTON NEW ORLEANS RIVERSIDE AND TOWERS  
NEW ORLEANS, LA  
OCTOBER 24 - 28, 2001  
(<http://www.sccmla.org/mtg.html>)



Expand your chapter horizons by attending the MLA Trichapter Meeting (Southern, South Central, Midcontinental) to be held in New Orleans at the Hilton New Orleans Riverside and Towers, October 24 - 28, 2001.

The program, local arrangements and professional development committees have done a spectacular job of planning five days of nonstop information, education, and entertainment.

Keynote speakers are **James J. O'Donnell**, Professor of Classics, Vice Provost for Information Systems and Computing, University of Pennsylvania, author of *Avatars of the Word: From Papyrus to Cyberspace*, speaking on "After the Internet..."; **John M. Barry**, author of *Rising Tide*, speaking on "Influenza 1918: the First Collision of Epidemic Disease and Scientific Medicine"; and **Joanne G. Marshall**, Dean, School of Information and Library Science, University of North Carolina, Chapel Hill, whose topic is "Valuing Ourselves and Our Work in the Information Age". MLA President, **Carol Jenkins**, University of North Carolina, Chapel Hill, and **Betsy**



**Humphreys**, Associate Director for Library Operations, NLM, will present the MLA and NLM Updates.

The activities you have always experienced at Southern Chapter

meetings will be available - Early Bird Reception, Welcome Reception, Hospital Library Luncheon (combined chapter luncheon and program; separate business meetings), vendor demonstrations, exhibits, Majors Walk, plenary and business sessions, contributed paper and poster sessions, continuing education courses, AHIP consultation, an update on the MLA Benchmarking Project, and dine-arounds. Our own **Scott Plutchak**, UAB, is planning some toe-tapping music for the Welcome Party. Your visit to New Orleans ends with a Louisiana "Halloween On The Bayou" at Michaul's Live Cajun Music Restaurant where you will enjoy great Cajun food, music and dancing. Don't be shy about dancing—lessons will be available. Start planning your fantasy costume (optional) now.

Stay tuned for availability of those delightfully elegant New Orleans masks.

The meeting hotel, the Hilton New Orleans Riverside, offers the ideal location for the conference. The Hilton is an easy walk to the Vieux Carre, the original city of unique buildings including St. Louis Cathedral, Jackson Square and a multitude of restaurants and entertainment venues. The Hilton is also within walking distance of the Warehouse District, home to more restaurants, art galleries and museums, including the newly opened D-Day Museum. A short cab or streetcar ride takes you Uptown, where you can walk the Garden District, visit the Audubon Zoo, or shop the five miles of stores on Magazine Street. The conference rate for rooms at the Hilton New Orleans Riverside are \$190 (single or double). Plenty of rooms are still available.



(continued on p21)

## *Around the South*

### News from Tennessee



**Shelly Paden receives the MLA Research, Development and Demonstration Project Grant award from J. Michael Homan, MLA President. Mary Congleton, her co-investigator, observes from the podium.**

### **James H. Quillen and Preston Medical Libraries Receive \$50,000 NLM Subcontract**

The East Tennessee State University, James H. Quillen College of Medicine Library and the University of Tennessee Medical Center, Knoxville, Preston Medical Library received a \$50,000 subcontract from the National Library of Medicine (NLM) ClinicalTrials section. The subcontract is one of four awarded in NNLM Regions 2 and 3. The libraries will collaborate to train public librarians, health professionals, and consumers in locating quality consumer health information. Effective use of the NLM databases PubMed, MEDLINE Plus, and ClinicalTrials.gov., will be emphasized. ClinicalTrials educational materials developed at NLM for use with patients and the public will be pilot tested as a part of the project. The Tennessee Resource Center, a state ILL referral center for public libraries, will cooperate with the subcontracting libraries to transmit information packets to public library patrons via Ariel. A one half-time consumer health information librarian will be added to the staff at the Johnson City location to provide educational and consulting services to public libraries.

### **Shelly Paden and Mary Congleton Receive MLA Grant Award**

Shelley Paden, Interlibrary Loan and Serials Librarian, University of Tennessee Medical Center, Knoxville, earned the MLA Research, Development, and Demonstration Project Grant award for 2001. Mary Congleton, Southeastern Kentucky AHEC Librarian and formerly Baptist Hospital Systems, Knoxville, is her collaborator on a survey of Loansome Doc users in the Midwest. Shelley and Mary received their \$1000 grant at MLA in Orlando.

### **Lett Named Director**



Rosalind Lett has been named Director of the Medical Library for Meharry Medical College in Nashville, Tennessee. She will begin her new position in July 2001. New contact information is: 1005 Dr. D.B. Todd Jr. Blvd, Nashville, TN 37208-3599 Telephone 615-327-6728. Fax 615-321-2932. E-mail [rlett@mmc.edu](mailto:rlett@mmc.edu)

*Submitted by Martha F. Earl*

## *Message from the Chair*

*continued from p.1*

But that doesn't mean we should rest, or that we don't need each and every one of you participating in chapter activities to the extent that you can. The annual meeting is coming up in October - as a big, Triple Chapter meeting with the South Central and MidContinental Chapters. I actually had a dream last night that 1,500 people attended this meeting in New Orleans (see, SC/MLA is even in my dreams)! We actually expect about 500 participants; Janet Fisher has an article on page 3 of this issue that provides more detail on this meeting. There will be continuing education for everyone, and as an added incentive, Southern Chapter will contribute \$30 from our treasury toward the registration costs of an SC/MLA member who registers for BOTH the full conference and a CE course. The other two chapters found our "Combo" package price idea so appealing, they have approved this for their members as well, making the whole "deal" easier for the registration folks to handle.

The Executive Board also discussed establishing an annual chapter meeting attendance grant intended for those members who have never been able to attend an SC/MLA meeting. The Honors and Awards Committee presented a draft set of criteria at the mid-year Executive Board Meeting in Orlando, and you will be hearing more about that shortly. We also discussed the amount (enough to cover travel, registration, accommodation, meals and a CE course) and how we would go about funding the award. I recommended that we start with the \$500 we received from the Majors/MLA Chapter Project of the Year Award, and continue building an endowment, similar to the Watkins Award. The Board and I are very interested in hearing your ideas about fund-raising projects. We may even be able to incorporate all those ideas for SC/MLA "identifiers" we discussed so enthusiastically on our discussion list this Spring, and stitch them into one big quilt of a project!

**"I am very proud of the Southern Chapter community and for all that our members do, either by serving as an officer or through committee work. But even more than that, I am proud of the way our members support each other."**

I'm closing with two more thoughts on why it is that Southern Chapter is such a vital organization. Some of this goes back to our founders, who were the directors of some of the largest medical libraries in the Southeast. They encouraged their staff members to join and become active in the Southern Regional Group, and extended this outreach to those in smaller academic and hospital libraries. To this day, the directors of the academic medical center libraries in the SC/MLA continue this tradition by encouraging membership and attendance, and showing leadership in the chapter. This kind of mentoring provides SC/MLA a snowball effect. Secondly, because Southern Chapter has this strong tradition, mentoring

is something that we all do and probably have experienced. I know my SC contacts over the past 26 years have taught me almost everything I know. This kind of encouragement, networking, and idea-sharing is what

builds a strong community of any kind. I am very proud of the Southern Chapter community and for all that our members do, either by serving as an officer or through committee work. But even more than that, I am proud of the way our members support each other. Thank you for that, too.

Lynn Fortney, M.L.S - Chair/SC/MLA



## *Around the South*

### **News from University of Miami**

**Joaquin Arriaga** served on the Web Updating Task Force of MLA's Problem Based Learning Special Interest Group.

**Suzetta Burrows'** paper, "Creating a Web-accessible, point-of-care, team-based information system (PoinTIS); the librarian as publisher", co-authored with **Kelly M. Moore** and **Henry L. Lemkau, Jr.**, was published in the Bulletin of the Medical Library Association, 89(2):154-164, April, 2001. She attended the Resource Library Directors meeting of the Southeastern/Atlantic Regional Medical Library Program of the National Network of Libraries of Medicine in Baltimore, March 30, 2001. During 2000/01 she served on the Evidence Based Librarianship Committee of the MLA Research Section and on the Nominating Committee of the Southern Chapter/MLA.

**Tanya Feddern** served as co-editor of the FHSLAlert for 2000/01.

**David Goolabsingh** served as editor of the FHSLAlert, the newsletter of the Florida Health Science Library Association, for 2000/01.

**Henry L. Lemkau, Jr.** attended the 5<sup>th</sup> PAHO/WHO Regional Conference on Health Sciences Information, April 24-27, 2001 in Havana, Cuba.

**Kelly M. Moore's** poster session, "Informatics Training to Prepare Faculty for a New Case-Based Medical School Curriculum", was co-presented with Carmen Rivera and Joaquin Arriaga at the Annual Meeting of the Medical Library Association, May 27-29, 2001 in Orlando, FL.

**Erica Powell** was Chair of the Florida Health Sciences Library Association for 2000/01 and presided at the Association's Annual Meeting, May 28, 2001 in Orlando, FL. Together with **Carmen Rivera** and **Peter Cruz**, she served on the Local Arrangements Committee for the Annual MLA Meeting in Orlando. She was appointed to the Standards Committee of the Technical Services Section of MLA for 2001/02.

**Mae Yahara** and **Kevin Manning** co-presented a poster session, "Point of Care Access to Resources on Spinal Cord Injury and Traumatic Brain Injury: Results of PoinTIS Demonstration Sites," co-authored with **Suzetta Burrows** and **Kelly M. Moore**, February 17, 2001.

### **More News from Tennessee**

**Jan Haley** has joined the staff of Saint Thomas Hospital in Nashville, and will be working with Dixie Williamson.

**Sharon Brown**, the new library Director for Wellmont Health Systems, oversees the Holston Valley Medical Center in Kingsport and the Bristol Regional Medical Center libraries. Sharon's background is in school libraries.

*Submitted by Martha F. Earl*

### **News from Shimberg Health Sciences Library**

The library faculty staff and several paraprofessionals from the Shimberg Health Sciences Library attended MLA 2001 Annual Meeting in Orlando. Many attendees also volunteered with the Local Assistance Committee.

Systems Librarian **Rose Bland** attended the ARL workshop, License Review and Negotiation: Building a Team-Based Institutional Process, in Atlanta on March 29-30. This informative workshop was hosted by SOLINET.

*Submitted by Karen Keene*

## *Job Announcements*

### **Georgia**

Medical Library and Peyton T. Anderson Learning Resources Center at Mercer University School of Medicine invites applications for two positions:

**Reference Librarian**  
**Savannah Clinical Campus Branch Librarian**

Contact Jan LaBeause, Director, Medical Library & LRC  
Mercer University School of Medicine, 1550 College  
Street, Macon, GA 31207

## Personals

### **Carol Burns Honored as MLA Fellow**

Retired Emory University Health Sciences Center Library Director, **Carol Burns**, was recently honored in Orlando, Florida at the annual meeting of the Medical Library Association. Carol received Fellow status in the Association. Fellowship is conferred on regular MLA members in recognition of outstanding and sustained contributions to the advancement of the purposes of MLA - to foster excellence in the professional achievement and leadership of health sciences library and information professionals to enhance the quality of health care, education, and research. Carol was nominated by Jocelyn Rankin, Chief, CDC Information Center.

Carol was deeply moved by the show of support from Southern Chapter members as she received the award. Southern Chapter members stood and applauded as she approached the podium.

Carol served as Director of the Emory University Health Sciences Center Library from 1984 to August 2000. She was named Librarian Emerita, effective August 31, 2000 by Emory University President, William Chace and the Executive Committee of the Emory University Board of Trustees.

*Submitted by Sandra Franklin*

### **Fay Evatt Featured in Atlanta Journal**

In the May 17, 2001 City Life article in the *Atlanta Journal*, the Atlanta Medical Center (formerly Georgia Baptist Medical Center) was featured on its 100th anniversary. Featured prominently in the article was **Fay Evatt**, librarian since 1964. It's worth taking the time to find the article to read Fay's comments (about "her babies" of course) and to see her smiling face!

*Submitted by Lyn Dennison*

### **T. Scott Plutchak Receives Estelle Brodman Award**



**Plutchak was presented award by J. Michael Homan, MLA President**

**T. Scott Plutchak**, Director of Lister Hill Library of the Health Sciences, University of Alabama at Birmingham, was awarded the Estelle Brodman Award for the Academic Medical Librarian of the Year at the 2001 MLA meeting. This award recognizes an association member who has made outstanding contributions to academic medical librarianship as demonstrated by excellence in performance, publications, research, service or a combination thereof. Scott, a Distinguished member of the Academy of Health Information Professionals, has been a leader at the local, regional and national levels. He has served MLA on two National Program Committees, is editor of the *Bulletin of the Medical Library Association*, and recently chaired the Leadership and Management Section. He has also served as chair of the National Library of Medicine's Special Emphasis Panel to review the Internet Connections grant proposals.

*Submitted by Nancy Clemmons*

## Chapter Council News

The big news from MLA 2001 was the success of the Southern Chapter in terms of “Honors and Awards.” Southern Chapter members were frequently on their feet, applauding, as **Carol Burns** was granted status as an MLA Fellow, as the Martha Watkins Scholarship Fund received well deserved recognition as the MLA/Majors Chapter Project of the Year, and as **T. Scott Plutchak** was granted the Estelle Broadman Award as the academic medical librarian of the year. All in all, it was a good day for the Southern Chapter.

Chapter Council met on Saturday, the 26<sup>th</sup> with **Jan LaBeause** and I representing Southern Chapter. We heard from a number of MLA dignitaries and received a report from **M.J. Tooe**y, Chapter Council Chair on the Thursday and Friday Board meetings. Following are highlights from those reports.

**Michael Homan**, outgoing President, thanked the chapters whose annual meetings he attended and said he was impressed by the quality of the programs. He said the themes for the past year for the Board were:

1. Creating a virtual association.
  - a. MLANet-Upgraded the server and increased the bandwidth. This upgrade increased speed and response time.
  - b. BMLA now in beta test online on PubMed Central.
  - c. The editorial board has improved the content of MLANet.
2. Strategies for the future and crafting a vision statement.
  - a. The Board has adopted “Quality information for improved health” as the vision statement. Wording can be added according to the context in which the statement is used.
  - b. In Spring 2002, a two-day invitational conference will be held to develop action items for the profession for the concept of informationist.
  - c. Dr. **Donald Lindberg** will lend his name to a drive to raise money for an endowment to continue research initiatives. Approximately \$25,000/yr is needed. Will be called the Lindberg Research Fellow.
  - d. The Pew Trust wants to work with MLA on a study of the effect of the Internet on American life. The endowment will involve a telephone survey and MLA will contribute to a best practices report.

**Carol Jenkins**, incoming President, feels that MLA is poised for taking a leadership role in quality information. Her priorities include:

1. Recruitment into the profession and the organization. She would like to have a new recruitment initiative in place by next year and she feels the chapters can play a major role.
2. Establishing “Centers of Excellence in Health Information Education” She feels that we are competing with a number of groups and need to make our expertise evident.
  - a. Requires education on demand with programs such as the Technology certification.
3. Addition of a President’s Page to MLANet to further enhance communication.

Incoming President Elect, **Linda Watson** asked for input from Council members and several issues were raised such as the push to make hospital librarians responsible for CME, the need for web-based instruction, concerns about hospitals closing libraries and the need to heighten awareness of the medical librarian’s role.



# Benchmarking Project

## Update on MLA Benchmarking Network

The MLA Benchmarking Network is alive and well!! It is making progress even though there have been growing pains. There were a number of meetings about Benchmarking at the MLA Annual Meeting in Orlando. The information gained from the participants in these meetings will be used to bring this project closer to implementation.

“The Benchmarking Taskforce worked to:

- Refine the content of the survey, based on the comments from Beta participants.
- Develop ratios that librarians will find useful to have as part of the Benchmarking reports. (e.g. number of FTEs in Library/ number of FTEs in institution)
- Plan for MLA member education about benchmarking. The Benchmarking Chapter Educators (BCEs) have been planning for education at the Fall Chapter meetings.
- Offer for the first time a four hour “Practical Benchmarking” course to train librarians in the most effective strategies for using the data.” (from an article submitted to National Network)

The Benchmark Chapter Educators (BCEs) are considering strategies to encourage participation by the MLA Chapter members in the Benchmarking Network. After the Fall Chapter meetings, instructions will be available concerning how and when libraries can enter and/or replace their data in the Network database. ALL hospital librarians are urged to take advantage of this opportunity to participate in what promises to be a useful benchmarking resource. The MLA Benchmark Network needs YOUR hospital’s data.

**Jacque Doyle** and **Bernie Todd-Smith** will be teaching a 5-hour CE course entitled “Benchmarking, a Practical Approach” at our October Tri-Chapter Meeting in New Orleans. Learning how to identify benchmarking partners and to present benchmarking findings to organizational audiences are some of the course objectives. If you are at all interested in benchmarking, PLEASE register for this course. It is scheduled from 8:00 A.M. -1:00 P.M. on Wednesday, October 24, 2001.

**Debbie Rand** is the new Chair of the Benchmarking Network Implementation Taskforce. Please contact Debbie at [rand@lij.edu](mailto:rand@lij.edu) (or other members of the new Taskforce listed below) with any questions or concerns. The Southern Chapter BCE, Linda Garr Markwell, ([liblgm@emory.edu](mailto:liblgm@emory.edu)), is also happy to address questions or concerns.

There is also a new MLA Benchmarking Network listserv which has been established to provide a forum for the discussion of benchmarking issues and specifically MLA Benchmark Network issues. To subscribe to [mla-benchmark@mlahq.org](mailto:mla-benchmark@mlahq.org):

Send an e-mail message to [majordomo@mlahq.org](mailto:majordomo@mlahq.org) (This address can also be used to send commands to Majordomo.) Type the message “subscribe mla-benchmark” (This will command Majordomo to subscribe the sender to the e-mail discussion list.) Please leave the subject line blank.

Benchmarking Implementation Task Force Members:

Deborah Adams – [dadams@botsford.org](mailto:dadams@botsford.org)  
Jacque Doyle – [jacque.doyle@bannerhealth.com](mailto:jacque.doyle@bannerhealth.com)  
Rosalind Dudden – [duddenr@njc.org](mailto:duddenr@njc.org)  
Cheryl Goodwin – [cheryl.goodwin@swedish.org](mailto:cheryl.goodwin@swedish.org)  
Gretchen Hallerberg – [hallerberg@ccf.org](mailto:hallerberg@ccf.org)  
Ruth Holtz, MLA Board Liaison – [rholst@columbia-stmarys.org](mailto:rholst@columbia-stmarys.org)

Janice Kaplan – [kaplan@harthosp.org](mailto:kaplan@harthosp.org)  
Michael Kronenfeld –  
[mike.kronenfeld@hcs.maricopa.gov](mailto:mike.kronenfeld@hcs.maricopa.gov)  
Elizabeth Reid – [reide@smh.toronto.on.ca](mailto:reide@smh.toronto.on.ca)  
James Shedlock – [j-shedlock@northwestern.edu](mailto:j-shedlock@northwestern.edu)  
Bernie Todd Smith – [bernie.todd-smith@viahealth.org](mailto:bernie.todd-smith@viahealth.org)

*Submitted by Linda Garr Markwell*

## *Around the South*

### News from Florida Health Science Librarians

**Sue Felber**, Coordinator of the Medical Library at the H. Lee Moffitt Cancer Center & Research Institute in Tampa has become a prolific author. Her latest string of publications include:

**Felber SH** "Searching for evidence-based oncology: tips and tools for finding evidence in the medical literature" *Cancer Control* 2000; 7:469-75 <http://www.moffitt.usf.edu/pubs/ccj>

**Felber SH** "Resources on the web: searching for information on clinical trials: *Cancer Control* 2001; 8:175-6; <http://www.moffitt.usf.edu/pubs/ccj>

**Felber SH** "Commentary on the informationist: a different perspective" *National Network* 2001; 25:20-1.

Sue is also the Information Specialist for *Evidence-based Oncology*, a Churchill Livingstone journal publication.

On March 19, 2001, **Bay Pines Veterans Affairs Medical Center** became the first VA in the country to open a satellite office of the American Cancer Society in the Patient Education Resource Center (PERC). The PERC is part of Library Service providing consumer and patient information to veterans and their families.

**Karen Roth**, Manager of Medical Libraries for Morton Plant Mease in Clearwater, taught a class in February 2001 for the Tampa Bay Library Consortium (TBLC) on "Medical Resources on the Web" for mostly public librarians.

**Addajane Wallace**, Medical Librarian for Halifax Medical Center in Daytona Beach, presented a poster on medical and public library partnerships in health information at the Florida Library Association annual meeting in Kissimmee, April 12, 2001. The poster covered activities sponsored by Ms. Wallace's contract, Electronic Access to Health Information for the Public, from the NN/LM-SEA. Ms. Wallace and **Henry Hasse**, Research Information Specialist for Winter Haven Hospital, are participating in the

NLM's "Prescription for Information" Pilot Project.

At MLA's Annual Conference in Orlando, May 2001, **Kelly Moore** (Calder Memorial Library, University of Miami), **Carmen Bou Rivera** (Pomerance Library & Resource Center, University of Miami School of Medicine) and **Joe Arriaga** (Calder Memorial Library, University of Miami) presented a poster entitled "Informatics Training to Prepare Faculty for a new Case-Based Medical School Curriculum."

**Carmen Bou Rivera**, Pomerance Library & Resource Center, University of Miami School of Medicine, was co-convenor of the Mental Health Special Interest Group at the recent MLA Annual Meeting. The group recently developed a website, <http://www.med.miami.edu/psychiatry/mhsig>.

**Richard Mercer**, Reference Librarian at Orlando Regional Healthcare System, and **Addajane Wallace**, Medical Librarian for Halifax Medical Center in Daytona Beach, helped staff the NN/LM booth at the last annual meeting of the Florida Library Association. **Pamela Sherwill**, Nursing Librarian at the University of Florida, staffed the NN/LM booth at the latest conference of the American College of Cardiology in Orlando.

Last, but by no means least, a huge **THANK YOU** to all the health science librarians from all over **Florida** (and other states, too) who contributed to the Annual Meeting of the Medical Library Association recently held in Orlando. Many librarians heeded the call to help staff booths for information and stuff packets.



*Submitted by Karen L. Roth*

## *Around the South*

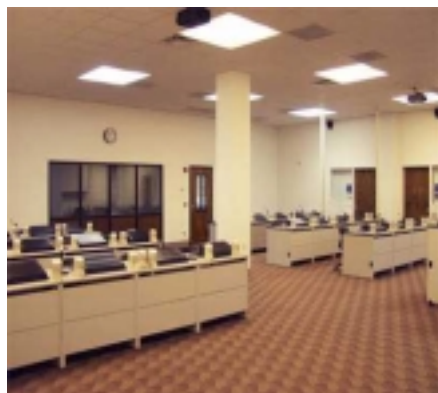
### **Greenblatt Library Medical College of Georgia**

A third electronic classroom has been installed in the **Greenblatt Library** to handle the increasing needs of the library and campus to use technology interactively while teaching. Using Computer Video Star System

technology, the instructor is able to control and project any or all of the 30 student workstations as well as the instructor station.

Recessed monitors and

two projectors have also increased the visibility and attractiveness of the room. The room has been well received by students and educators.



**Greenblatt Library Electronic Classroom**

Ms. **Kathy Davies** joined the faculty of the Greenblatt Library as Assistant Professor and Education Coordinator on June 15, 2001. Kathy has



**Kathy Davies**

extensive teaching experience through her most recent position as Outreach and Education Coordinator at the Greater Midwest Region of the National Network of Libraries of Medicine. She received her MLIS from the University of Southern Mississippi in 1995 and completed a two year post graduate Academic Resident Librarian Program at the University of Illinois at Chicago. At the Medical Library Association Annual Meeting in Orlando in May, she presented a poster on "Variations in MeSH Mapping". We welcome her to the Medical College of Georgia.

*Submitted by Lyn Dennison*

### **University of South Carolina School of Medicine Library**

The Library's second floor renovation project is moving along swiftly. The journal collection has been packed into 3,700 boxes and moved into four rooms on the medical school campus. All shelving has been dismantled and shipped off for refinishing. Demolition began June 4. In theory, construction will run June 4-August 25. See the Library web page at <http://uscm.med.sc.edu> for photos of the pre-construction phase of the project.

The School of Medicine Library and the Center for Disability Resources, Department of Pediatrics, School of Medicine, have formed a collaborative partnership to provide disability information services to the Center for Disability Resources, to the South Carolina Department of Disabilities and Special Needs, to Project SIGHT and BabyNet, to School of Medicine faculty, staff, and students and to South Carolina families in need of disability information. We anticipate relocating the Center for Disability Resources Library to the School of Medicine Library by late summer or early fall 2001. We are continuing the service of providing postage-paid return mailers for materials mailed to families. Ms. **Rozalynd McConnaughy** has been appointed to the position of Coordinator, Center for Disability Resources Library. Ms. McConnaughy is a May 2001 graduate of the University of South Carolina College of Library & Information Science.

The Library co-sponsored and hosted the teleconference "Emerging Technologies: New Roles for Librarians and Information Providers" on June 7. The conference was funded through a grant from the Institute for Museum and Library Services and co-sponsored with the Western Maryland Area Health Education Center and the West Virginia Library Association. **Ed Sperr**, Systems Librarian, served as a presenter and coordinated the teleconference.

**Sarah Gable**, Associate Director, was selected as a participant for the Southeastern Institute on Collaborative Library Leadership in Atlanta May 7-11. She was one of thirty librarians selected from Alabama, Florida, Georgia, Kentucky, Louisiana, Mississippi,

*(continued on p.16)*

# *Continuing Education*

## *New Orleans 2001* **Continuing Education Courses**

Course	Wednesday October 24 8:00 a.m. - 5:00 p.m.	Instructor
Alternative Medicine: No Longer Just a Fad		Sharon Lezotte & Theresa Arndt
Grant Writing: Writing Winning Proposals		Bob Bradley
Health Informatics for Librarians		Mary Ellen C. Sievert, PhD
 <b>Thursday October 25</b> 8:00 a.m. – 1:00 p.m.		
Benchmarking: A Practical Approach		Jacqueline Doyle & Bernie Smith
 <b>Thursday October 25</b> 8:00 a.m. – 12:00 noon		
Copyright for Educators in the Electronic Age		Marie Reidelbach & Mary Helms
Electronic ILL Management Systems		Ann Morrow Schwab
It's About Time, It's About Space: Time and File Management		Lynn Fox
Palmtop Computers in the Library		Mari Stoddard
SuperSearcher {Web Search Engines and Special Sites		Bryan Vogh
 <b>Sunday October 28</b> 8 :00 a.m. – 5:00 noon		
History of the Health Sciences: A One-Day Overview		Patricia Gallagher & Stephen Greenberg
Nursing Information Access: Library Services For the Nursing Profession		Margaret (Peg) Allen
 <b>Sunday October 28</b> 8:00 a.m. – 3:00 p.m.		
Legacy Leadership AND Communication Mistakes		Patricia (Pat) Wagner
Writing for Peer-Reviewed Library Journals		David Armbruster, PhD

# *Continuing Education*

## *New Orleans 2001* Continuing Education Courses

Course	Sunday October 28 8:00 a.m. – 3:00 p.m.	Instructor
Legacy Leadership AND Communication Mistakes		Patricia (Pat) Wagner
Writing for Peer-Reviewed Library Journals		David Armbruster, PhD
	Sunday October 28 8:00 a.m. – 12:00 p.m.	
Copyright Basics for ILL		Ruicha Mishra
Electronic Journals: the Promise and the Realities		E. Diane Johnson
Law Reference for the medical Librarian		Eileen Cohen
Proving Your Worth: Professional, Business and Polictical Tools		Michelynn McKnight
Keeping Up With NLM's PubMed		Toni Yancey
Health and Medicine on the Internet		Diane K. Kovacs
	Sunday October 28 1:00 - 5:00 p.m.	
Health and Medicine on the Internet (Hands-On)		Diane K. Kovacs

## Continuing Education Registration Fees

	<u>Chapter Member</u>	<u>Non-Chapter Member</u>
Full-Day Course	\$150.00	\$175.00
Six-Hour Course	\$125.00	\$150.00
Half-Day/Five-Hour Course	\$100.00	\$125.00

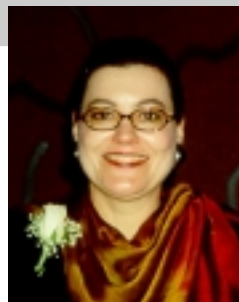
**Registration for courses will be handled on a first-come, first-served basis.**

**Class places will NOT be 'reserved' before payment is received.**



## Research Spotlight

***Helvi McCall interviews Lynn Fortney,MLS ,  
Chair, SC/MLA and Vice President and  
Director Biomedical Division, EBSCO  
Information Services.***



**Fortney**

***Q: Lynn, you have completed a number of research projects. You continue to produce the Index Medicus Journal Price Study and just a few years ago you completed a study on the availability of electronic journals. How do you get started on a project?***

**A:** The idea for the Index Medicus Price Study came about in 1989, a time of tremendous journal price increases coupled with tight budgets for libraries (so what else is new?). From anecdotal experience from other medical librarians (and my own), it seemed that schools and departments were accusing each other of “taking up all the money” and accusing libraries of mismanagement and/or lack of information about what was happening to their collections. Because medical libraries don’t traditionally arrange their journals by subject area, it was difficult to determine just how much of the serials budget was being “taken up” by biochemistry, or genetics, or nursing, etc. I was extremely fortunate that EBSCO was also interested in this problem and was willing to hire me and provide the resources to do the research. I simply was in the right place at the right time and willing to take the risk to go ahead with the idea of researching the problem.

By the time I did the electronic journal availability study, I had been at EBSCO about ten years and the journal world had changed dramatically. The common perception that “everything is free and on the Internet” was making many a hospital librarian’s life miserable. Having had seven years of hospital library experience, I know what the time pressures are like. There isn’t a lot of time or money or support for little research studies like the availability of e-journals - yet I knew “The Truth was out there”, if only it could be put down on a chart to show to administrators. I somewhat regret never formally publishing that research (I only presented to library groups), but I felt that things were changing so rapidly, the typical print publication

cycle would make the information pretty moldy by the time the print hit paper.

***Q: Did you have to make some difficult choices or solve any problems in carrying out your study? What was the methodology for your study?***

**A:** I think the first problem I have had to solve in the research I’ve done is to determine the “sample universe”. For the Price Study, I originally wanted to study all biomedical serials literature - an impossibly grandiose idea. Define “biomedical” and then define “serials”! So we honed it back to a well-known and reliable data set: those titles indexed in Index Medicus. Even as meticulous as NLM is with their bibliographic data, there were discrepancies in titles and in ISSN. We used different transliteration methods, which caused any amount of difficulty for the Chinese titles. One has to think very carefully about the hypothesis. What is the question and what are you trying to determine?

***Q: What were the results of your study and their implications for librarians?***

**A:** The Index Medicus Price Study clearly showed that the overall costs of the basic sciences journals were eating up medical library journal budgets - yet it is the basic sciences that are bringing in the federal research dollars at larger institutions, and titles in biochemistry, genetics, analytical chemistry, etc. just cannot be eliminated.

***Q: Please comment on the role of ‘research and development’ in the commercial sector, such as for EBSCO.***

**A:** Since my research is sponsored by EBSCO, I try to design methodologies that can result in information EBSCO can use in more than one way. For example, when I assign a medical subject heading (not MeSH,

*(continued on p.15 )*

## ***Research Spotlight*** ***continued from p.14***

but based on those broad subject terms used in LJI), this information is included in our Title Information Database. This enables EBSCO to produce a number of special collection development reports for medical libraries.

Without R & D, we'd probably still be living in caves. People who have creative ideas matched with those who can put the ideas in action are essential for any organization - libraries or businesses, you name it. But one can't be afraid to fail. I've been involved in R&D efforts at EBSCO for products and services that never saw the light of day.

***Q: Do you think we need to encourage and seek out collaborative opportunities for research projects between librarians and commercial interests?***

**A:** Absolutely - I know EBSCO gets our best ideas from our customers. Commercial interests can provide the resources (in terms of data and maybe money), but librarians really are the ones who know what the problems are and should be coming up with the ideas. However, commercial interests are just that - businesses need to see the anticipated return on investment (ROI) before they will consider going forward with research. In other words, if a business doesn't consider whether the research project will improve their workflow or product or service or provide a tangible benefit to their customers, they would be ill advised to go ahead with it. I think we're seeing more of a reality check regarding ROI as many of the dot coms have "dot went" (with thanks to Eugenie Prime).

***Q: As a board member of MLA, please describe some of the important research initiatives currently identified by MLA.***

**A:** The Value of Information Study is in process, and the Benchmarking Implementation Taskforce will be looking at how MLA should manage and administer a benchmarking database that will provide a tremendous amount of data for research, especially for hospital libraries. The Hay Study outlined where we stand in terms of salaries as compared to other

information professionals. MLA is interested in exploring the Informationist concept - what it is, is it librarianship, etc. We've identified several new research initiatives having to do with consumer health information: credibility, availability, value, etc. We've established a research fellowship named for Don Lindberg to support research designed to improve the practice of the profession.

***Q: Are there some important research questions that SC needs to focus on?***

**A:** This answer is related to a hard lesson that I had to learn: will this research make us a better option than Vendor X and if EBSCO invests the money to do this, will libraries be willing to pay for it, or will they go with Vendor X for the lowest price? The same thing might be true in a university or hospital - does our library make us better than that other medical school or the hospital across town that doesn't even have a library? How do we (as SC/MLA or MLA) continually produce the proof (through "research") that this is the case? It's a matter of self reservation, because if we medical librarians can't show that we're doing the world some good, then we might as well hang it up. That's why MLA "commissioned", through a grant, "Value of Information" Study. It should be news we can use.

***Q: In your mind what is the single most important research question that you would like to see addressed?***

**A:** I'd really like to see more research on the impact of the provision of accurate consumer health information on health care costs and outcomes. Proof of a positive correlation would help elevate the role of the medical library, and more importantly, the LIBRARIAN. There is a bit of research out there now, but too many times I see "Studies have shown...." with no references! I think we, as librarians, always want to believe that information is beneficial, but unless we can prove that it brings a commercial advantage to those organizations that provide it, it's just going to be another "motherhood and apple pie" concept.

*Submitted by Helvi McCall, Research Committee*

## *Financial Report*

### **Bookkeeper's Report**

SOCHAP continues to enjoy financial strength.

As of May 24, 2000, the checking balance is \$20,129.34. Our CD asset is currently valued at \$15,528.82. As of May 24, 2001 the SC/Martha Watkins fund balance is \$10,899.36. The Mobile 2000 meeting met the financial goals and made a modest profit above the seed money of about \$415.



Expenses thus far this year have been largely minor and expected costs of chapter business. A check for \$1,000 in "seed money" has been sent to our New Orleans hosts for the necessary expenses associated with the New Orleans meeting this fall.

The only cloud on the horizon - our CD asset and the Martha Watkins fund are both currently invested at 6.15%+ interest. It is not likely that we will be able to renew at those rates in the foreseeable future.

*Submitted by Marilee Creelan*

## *Around the South*

### **University of South Carolina School of Medicine Library**

*(continued from p.11)*

North Carolina, South Carolina, Tennessee, and Virginia who attended the institute. This was a week-long institute designed to develop and enhance leadership among library staff engaged in consortial or collaborative activities.

**Karen Rosati**, Head of Serials, and **Victor Jenkinson**, Head of Circulation, published the article "Anxiety Disorders: Better Health Through Communication" in *Health Care on the Internet*, Volume 5, Issue 1, 2001.

**Ruth Riley**, Director, and **Sarah Gable**, Associate Director, served as exhibitors for the National Network of Libraries of Medicine Southeastern/Atlantic Region at the South Carolina Medical Association in Charleston, April 27-28.

*Submitted by Ruth Riley*

## *Around the South*

### **South Florida Library News & Changes**

New 2001 officers for the Miami Health Sciences Library Consortium are: **Rana Dole**, Chair, from Broward General Hospital; **Devica Samsundar**, Chair-elect, Baptist Health Systems of South Florida; Secretary, **Carrie Figueredo**, Beckman Coulter; and Treasurer, **Dolly Farooqi**.

#### **New folks in South Florida include:**

**Heidi Heitlauf** is now at Palmetto General Hospital in Hialeah, FL. She formerly worked at the library at Florida Hospital Deland.

**Doris Wisher** is the medical librarian at Bethesda Memorial Hospital's Raborn Library. Formerly on the staff at the Countway Library of Medicine at Harvard, she worked in public libraries in Oregon before coming to Florida for some sunshine and challenge in the hospital library setting.

**Diane Rourke**, director, Library Services, Baptist Health Systems of South Florida, celebrated National Library Week at South Miami Hospital on April 5, 2001 with a program titled "E-books, Palm pilots and all that: a gentle guide to your electronic life", featuring a selection tips for purchasing PDAs (personal digital assistants) and also featuring staff author, **Dr. Brad Aiken** who published his first science fiction book, *Starscape: the Silver Bullet*, electronically, as a "print on demand" book.

**Devica Samsundar**, program coordinator, Baptist Health Systems of South Florida, will be completing her undergraduate Bachelor of Science degree this year in Library and Information Technology, through the University of Maine at Augusta in their distance learning program. If you have any questions about the program, contact her at [devicas@bhssf.org](mailto:devicas@bhssf.org).

*Submitted by Diane Rourke*

## *Chapter Participation in MLA International Project*



### *Thank You Southern Chapter*

This year, MLA's International Cooperation Section established a Sister Library Initiative, a fourteen month pilot project designed to assist selected libraries by providing a computer, at least one electronic database, library supplies, books and journals, interlibrary loans and training. Two libraries, The Medical Research Library of Latvia in Riga, and The Medical Library of Holberton Hospital in St. John's, Antigua were selected for the project.

A generous outpouring of assistance has been made from medical librarians and medical libraries from the Southern Chapter:

Southern Chapter librarians and libraries donating books, journals, or interlibrary loans to **Latvia**, include:

- \* **Scott Plutchak** and **Gwendolyn Jones**, Lister Hill Library, University of Alabama, Birmingham
- \* **Tom Williams**, Charles M. Baught BioMedical Library, University of South Alabama, Mobile
- \* **Pam Neumann** and **Sandra L. Canham**, Borland Health Sciences Library, University of Florida Health Sciences Center, Jacksonville
- \* **Henry Lemkau** and **Peter Druz**, Louis Calder Memorial Library, University of Miami School of Medicine
- \* **Lyn Dennison** and **Marilee Creelan**, Greenblat Library, Medical College of Georgia, Augusta
- \* **Ellen Cooper** and **Pamela Truax**, Solvay Pharmaceuticals Research Information Center, Marietta, Georgia
- \* **Tom Basler**, **Geraldine Singleton**, and **Dee Boggan**, Medical University of South Carolina Library, Charleston
- \* **Jan T. Orick**, Biomedical Library, St. Jude Children's Research Hospital, Memphis, Tennessee

Southern Chapter librarians and libraries donating books, journals, supplies, or interlibrary loans to **Antigua**, include:

- \* Shriners Hospital for Children, Greenville, South Carolina
- \* James H. Quillen Medical Library, East Tennessee State University, Johnson City, Tennessee
- \* Barbara Ruelle, Health Sciences Center Library, Emory University, Atlanta

Books, journals and interlibrary loans have also been donated by other MLA chapters, as well as our MLA international colleagues in Norway and Sweden.

*(continued on p.19 )*

## *Around the South*

### News from Mississippi

#### **Roland Medical Library Adds Web of Science**

Rowland Medical Library has recently added ISI Web of Science to its electronic databases. This package includes Current Contents/ Clinical Medicine, Life Sciences, and Social & Behavioral Sciences, Science Citation Index Expanded, and Social Science Citation Index. These databases provide up-to-date bibliographic information and will benefit UMC faculty, researchers and students with flexibility in searching and tracking citations and obtaining other useful information. Training sessions by an ISI associate have been scheduled at RML for August this year.

#### **Ardis Haaland Selected National Fellow**

**Ardis Haaland**, head of Rowland's reference department, has recently completed a week-long survey course, designed to familiarize individuals with the application of information science and computer technologies in health care, biomedical research, and health professions education. A competitive process, Haaland applied and was selected as a National Library of Medicine fellow for the Medical Informatics 2001 program. Only 30 applicants nationwide are chosen for this weeklong, all expenses paid program, which is held twice a year at the Marine Biological Laboratory in Woods Hole, Massachusetts. The course is designed to teach physicians, nurses, and other health professionals to incorporate computer technology into their health care, biomedical research and continuing health professional education. Applications are also accepted from librarians, therefore this fellowship award was quite an honor for UMC and the library as well as Haaland personally. Through a combination of lectures and hands-on computer exercises, participants were introduced to the conceptual and technical components of medical informatics. Haaland states, "it was challenging and rewarding, a great experience." This training gave her "an opportunity to expand her knowledge and skills," which she can now apply toward enhancing the

library's information services.

#### **Sandra Sanders Joins RML**

Rowland welcomes **Sandra Sanders** as the latest member of RML's family. Sanders joined the staff as head of the lending services department on May 14,

bringing a wealth of experience with her. She holds the academic rank worked as interim director and assistant director of the Central Mississippi Regional Library System from 1999 until she joined Rowland's faculty. She began working there in 1997 as coordinator of administrative services. Prior to moving to Mississippi, Sanders resided in Kentucky where she worked in the Murray State University Libraries system from 1990 through 1997. In 1996 while working at Murray State, Sanders received a faculty

research grant to attend and participate in the 12<sup>th</sup> Annual Thomas Hardy Conference in Dorchester, England. Also during the summer of 1993, she was part of a faculty exchange program with the Reference Department, University of Sunderland, England.

Sanders is a graduate of Murray State University in Murray, Kentucky where she received her master of arts degree in English literature and creative writing in 1992. She earned her master's degree of library and information science from the University of Southern Mississippi in 1986. While at "Southern" she worked as a graduate assistant in the school of library science. Her undergraduate degree in art and English was earned at the University of Arkansas in Fayetteville. After getting her degree she joined the reference staff at the University of Arkansas' Law Library, where she worked for two years. In addition to her daily work schedule, Sanders loves to write. She has several publications and presentations to her credit. A member of the American Library Association, the Kentucky Philological Association, and the Thomas Hardy Society. Sanders is also an avid birdwatcher and belongs to several associated organizations.





## Chapter Participation in MLA International Project

*continued from p.17*

Additional accomplishments during the first few months of the project include:

### For Latvia:

- The Medical Research Library of Latvia provided a detailed listing of specific books and journal volume and issues needed. This list was widely publicized to US medical libraries in January 2001, and thus far 23 libraries have donated the equivalent of 32 large boxes of books and journals. The Cleveland Branch of the American Latvian Society provided funds to ship the materials from Cleveland and they are due to arrive in Latvia in early May.
- The Latvian Physicians and Dentists group is in the process of raising additional funds for a series of additional shipments of books and journals to Latvia.
- The profile of the Medical Research Library of Latvia has been raised through communicating this project to the Latvian President, the Latvian Ambassador in the US, and the American Ambassador in Latvia.
- NLM arranged for the Medical Research Library of Latvia to have DOCLINE, and NLM staff and a member of our Latvian subcommittee taught the Latvian Librarians to use DOCLINE.
- Many US and Canadian libraries are sending interlibrary loans to Latvia.
- The Research Libraries Group graciously donated the Ariel software to the Medical Research Library of Latvia. This has greatly facilitated quick transmission of needed documents. Since March, 37 Ariel interlibrary loans have been received by the Latvian library.
- STAT!Ref donated their products containing 32 medical textbooks to the Medical Research Library of Latvia. Between March 7 and April 20, 118 health professionals have used STAT!Ref and viewed 13,516 documents.
- The Latvian subcommittee has worked very closely with the American Latvian Association. The American Latvian Association published two detailed stories of this project in its two newspapers: Laiks (published in the Latvian language), and Latvian Dimensions (published in English). Several Latvians living in the US have contacted the Latvian subcommittee to offer help and to enthusiastically applaud this project.

- A member of the Latvian subcommittee (who is from Latvia originally and speaks Latvian) traveled to the Medical Research Library of Latvia in August 2000 to better coordinate the project, provide some training, and to meet with Latvian government officials to discuss this project.

### For Antigua:

- Medical books, journals, interlibrary loans, and library supplies have been donated from many libraries.
- AB Short of Medshare International has pledged support for shipping of resources.
- The Antigua Consulate based in Atlanta has provided shipping assistance for library materials.

## Donations

If you would like to offer donations to either of these Sister Libraries, or if you have contacts in Antigua that might provide assistance for the project, please contact one of our committee members.

### Sister Initiative Committee:

Chair:

**Vicki Croft** - [croft@wsu.edu](mailto:croft@wsu.edu)

### Latvian Subcommittee:

Chair:

**Donna Flake** - [donna.flake@coastalahec.org](mailto:donna.flake@coastalahec.org)

Members:

**Livija Carlson** - [l-carl@tc.umn.edu](mailto:l-carl@tc.umn.edu)

**Leslie Mackler** - [leslie.mackler@mosescone.com](mailto:leslie.mackler@mosescone.com)

**Eve-Marie LaCroix** - [lacroix@nlm.nih.gov](mailto:lacroix@nlm.nih.gov)

### Antigua Subcommittee:

Chair:

**Avril Reid** - [reidavri@carec.paho.org](mailto:reidavri@carec.paho.org)

Members:

**Barbara Ruelle** - [libbar@emory.edu](mailto:libbar@emory.edu)

**Janet S. Fisher** - [fisherj@access.etsu.edu](mailto:fisherj@access.etsu.edu)

Members at Large:

**Diane Ebro** - [gobucks@okstate.edu](mailto:gobucks@okstate.edu)

**Lenny Rhine** - [lenny@library.health.ufl.edu](mailto:lenny@library.health.ufl.edu)

*Submitted by Donna Flake, AHIP  
MidAtlantic Chapter, MLA*

## *Chapter Council News*

*continued from p.8*

In January, 2001 the American Society of Association Executives designated **Carla Funk**, MLA Executive Director as a Certified Association Executive (CAE). She mentioned a number of items:

1. There was a "Year in Review" flier in each registration packet with a promotional poster on the back.
2. Development of a career brochure with variations to target different age groups. This will be available in print and on the web.
3. This year the MLA Booth had a membership section and there was a new MLA pin available for purchase.
4. PCI marketing courses are still being planned.
5. Quite a bit of activity in terms of diversity recruitment made possible in part by the grant from NLM. Work with the ALA Spectrum Initiative is ongoing. Minority scholarships and regular scholarships have been increased.

**M.J. Tooley** reported on the meetings of the Board on Thursday and Friday. Of interest:

1. MD Consult will likely be bought out by Elsevier. Carla is looking at renewing the group purchase agreement with them. Also considering a similar arrangement with "Up-to-Date."
2. PCI is still doing a good job with marketing. They have arranged for an article on medical librarians in a forthcoming issue of Modern Healthcare.
3. There will be two large joint meetings. In addition to the tri-chapter meeting in New Orleans the New York/New Jersey and NAAHSL groups will meet in New Haven.

Attendance at the Chapter Sharing Roundtables continues to grow. One hundred additional people registered this year for a total of 350 people who pre-registered to participate in this event.

The CE Committee is working on an independent reading program, similar to the journal clubs but done by individuals. They plan to provide mentors for provisional members and award AHIP credit for mentoring. Consideration is also being given to increasing the credit given for research projects and awards. They might also petition for an AHIP emeritus status. This would be granted for a one-time fee at the current level and would remain in effect for life.

Response to the Benchmarking Initiative has been good. Testing of the Benchmarking Network has been successful and this year MLA will begin implementing the network. The Vendor Relations Task Force has drawn up guidelines for appropriate interactions with vendors. They will be available on MLANet.

The deadline for application for the MLA/Majors Chapter Project of the Year Award has been moved forward to coincide with other award deadlines. Projects must be submitted by Nov. 1<sup>st</sup>.

And last but not least, our candidate, Sandra Franklin, was elected as a nominee for the MLA Nominating Committee. Congratulations, Sandra. We'll be looking for your name on the ballot.

Sarah Gable, Chapter Council Representative  
Jan LaBeause, Chapter Council Alternate

## MLA Tri-Chapter Meeting

*continued from p.3*



A new and special benefit of chapter membership is offered this year by all three chapters. **A discount of \$30.00 is available for attendees who register for the full conference plus at least one continuing education course.** The conference rate for registration, which has not been set, will be in the range of \$150 - \$165 (check the web page for updates). Conference packets will be mailed mid-July. The deadline for preregistration is September 14<sup>th</sup>.

Continuing education courses are scheduled for Wednesday, Thursday, and Sunday. Refer to the accompanying article in this issue for the listing of full and one-half day courses.

***New Orleans is THE place to be October 24-28.***

***Check the web page for late breaking news.***

**<http://www.sccmla.org/mtg.html>**

*Submitted by Janet Fisher*

## Announcements

### Notice

#### **MLA Annual Meeting:**

##### **MLA Research Section Contributed Paper.**

Panel's title: The Research Process: The Beginning or How to Get Started. Paper's Title: Introductio to Qualitative Research.

#### **Charman:**

##### **MLA Fellows and Honorary Members Jury -**

Please submit your nominations for Fellows and Honorary Members to MLA Headquarters.

##### **MLA Hospital Library Section Professional Recognition Award Committee -**

Please submit your nominations for Hospital Librarian Award for 1) Leadership 2) Publications 3) Research 4) Technological Innovation, from the Southern Chapter. In reviewing the list of past award winners, there seem to be very few recipients from the Southern Chapter. We have lots of terrific hospital librarians, let's honor them.

Submit nominations to:

**Helen Ann Brown** [habrown@med.cornell.edu](mailto:habrown@med.cornell.edu) or  
**Cheryl Dee** [cdee@chumal.cas.usf.edu](mailto:cdee@chumal.cas.usf.edu)

*Submitted by Cheryl Dee*

#### Mentors Needed for SC/MLA Provisional Academy Members

Southern Chapter members holding membership in the Academy of Health Information Professionals are encouraged to volunteer to become a mentor for a Provisional member. Provisional Members are assigned a mentor when they apply. The mentor helps acculturate newer health information professionals and provides expertise in selecting continuing education opportunities and professional activities.

Mentor responsibilities include examining the provisional member's education, experience and goals, identifying areas in which continuing education may be appropriate, discussing annual renewal at the provisional level, and encouraging good practices for upgrade to Member or Senior status after five years of full time professional work experience. For more details, see the MENTORING FOR THE ACADEMY section at <http://mlanet.org/academy/mentor.html>

*Submitted by Sandra Franklin*

## *Around the South*



### *Thank You!*



I would like to extend a big **THANK YOU** to all of the Southern Chapter librarians who greatly contributed to the success of the Medical Library Association's annual meeting in Orlando, Florida. An initial review of the evaluation forms rated the local assistance highly. Congratulations! There is a long list of individuals who volunteered to do portfolio assembly, staff the hospitality center and the member resource room, and produce the daily newspaper.

**Thank you all very much!**

A very special thanks goes to the following people: **Naomi Elia**, **Richard Mercer**, and **Deedra Walton** who were very active in developing the restaurant guide and providing "local" assistance to the Local Assistance Committee; **Myra Sterrett**, for her masterful leadership of the Hospitality Subcommittee and especially the Disney Boot Camps she ran prior to the meeting; **Beverly Shattuck**, chair of the Facilities Committee, for getting volunteers to staff the member resource room, and to stuff the packets. **Danny O'Neal**, for heading the editorial team of the daily newsletter, "The Squeak", a valuable service to all attendees. The following people on the HSC Libraries staff were very involved in the activities of the LAC. **Bill Kuntz** provided web form development and assistance; **Libby Anderson** did the layout/design for the restaurant guide; **Michele Tennant**, another Disney-holic, worked on the restaurant guide and helped lead a Disney boot camp; **Sandra Canham** developed the count-down articles on the listserv; and **Tara Tobin** did a great job with the hospitality center notebooks. **Pam Neumann** did double duty as a member of the National Program Committee and as a member of the LAC.

**With Sincere Thanks,**  
**Faith A. Meakin**  
**Chair, Local Assistance MLA Orlando 2001**

---

### **MLA News from the University of Florida**

**Faith Meakin**, **Myra Sterrett**, **Linda Butson**, **Lenny Rhine**, **Michele Tennant**, **Cecilia Botero**, **Peggy Hsu**, **Dwight Bennett**, **Bill Kuntz**, **Barbara Francis**, **Pam Sherwill-Navarro**, **Nancy Schaefer**, **Rae Jesano**, **Tara Tobin**, **Dennis Hogue**, **Pam Neumann**, **Sandra Canham**, and **Susan McCullough** all attended and volunteered at MLA in Orlando. **Michele Tennant** taught a course at the conference, Bridging the Molecular Gap: Understanding & Identifying the Standard Protocols & Experiments for Molecular Biology. Additionally, she moderated the Gene Therapy session, the Molecular Biology and Genomics SIG, and a Toxicology session. **Tara Tobin** exhibited a poster co-authored by **Barbara Francis**, **Susan McCullough** and others entitled: A Team Odyssey: Creating a PubMed Web Tutorial for Use Outside the Classroom. **Lenny Rhine** was a speaker at Wednesday's Symposia, Library Partnerships – Powerful Connections. **Libby**

**Anderson** and **Ruth Beltrami** won the second place award at MLA's Swap and Shop for the HSCL Annual Report.

### **Other Meeting News**

**Dwight Bennett** and **Michele Tennant** are attending SLA. **Michele** is part of the panel "Building Bridges to Our Users: Liaison, Outreach and Marketing Programs that Work". She is also moderating a session entitled "Organizing Biodiversity: Systematics from Museum to Molecule". She is also going to run the Incoming Board Meeting and assume her post as Chair of the Biomedical and Life Sciences Division.

### **People:**

Welcome to **Dwight Bennett** who joined the Health Science Center Libraries' staff as our Webmaster. Dwight comes to us from the private sector after years of experience and his Masters degree in Educational Media and Instructional Design

## *Hospital Libraries Committee*

### **New Orleans**

**Michelynn McKnight** will speak on “Sharing Your Wealth” at the Hospital Librarian’s Luncheon. Michelynn, Director of the Health Sciences Library, Norman Regional Hospital, Norman, Oklahoma, is the current chair of MLA’s Hospital Library Section. She has been a hospital librarian for 18 years, is a doctoral candidate and frequent contributor to MEDLIB-L.

**Martha Watkins Scholarship** [www.lhl.uab.edu/lister/scmla/mom.htm](http://www.lhl.uab.edu/lister/scmla/mom.htm) helps defray expenses for CE at Southern chapter meetings for hospital librarians who are current SC/MLA members and are employed by a health care organization accredited by JCAHO. Awards will not exceed \$300.00. Send applications to Lynette Ralph, Chair, Honors and Awards Committee.

**Nominations for the Hospital Librarian of the Year** award are due September 1. [www.lhl.uab.edu/lister/scmla/hospawa.htm](http://www.lhl.uab.edu/lister/scmla/hospawa.htm). Nominee must be a member of MLA and SC/MLA. The recipient of the award will be presented with a plaque and \$250.00 at the annual meeting. Send applications to Mary Fran Prottzman, Chair, Hospital Libraries Committee.

**National Library of Medicine Classification**, Fifth edition 1994, revised 1999, beta version is available at [wwwcf.nlm.nih.gov/class/](http://wwwcf.nlm.nih.gov/class/). Search by term or classification number.

*Submitted by Mary Fran Prottzman*

## *Around the South*

### **University of Florida News (continued from p.22)**

from the University of Florida.

Farewell to **Susan McCullough** who is leaving Borland Health Sciences Library at the University of Florida Health Science Center Jacksonville for a position at Baptist Health in Jacksonville.

The HSC Libraries’ Nursing Librarian, **Pamela Sherwill-Navarro** was elected to the post of Vice-President/Program Chair of the Florida Health Science Library Association (FHSLA). **Sandra Canham** at Borland Health Sciences Library was elected to the office of secretary for FHSLA.

### **News from Alabama**

**Jan Burns** has accepted the position of Chief, of Library Services, at the VA Medical Center in Reno, Nevada. Her main task will be to create a “virtual” library for both the clinical staff and the patients and their families. Her last day at the Birmingham VA Medical Center was June 25th.

**Susan Williams**, has accepted a position at Kansas University Medical Center in Kansas City. Susan has held an appointment at the Providence Hospital Health Sciences Library, Mobile, Alabama.



Murray

Sally Murray, Internet Resources and Education Librarian, CM Baugh Biomedical Library, University of South Alabama presented a paper, *The Magic of Prospero*, at the MLA annual meeting 2001.

*Submitted by Judy Burnham*





*Estelle Brodman Award*



T. Scott Plutchak and J Michael Homan

*MLA Research, Development Project Grant Award*



J. Michael Homan and Shelly Paden

*"When our SC/MLA members win award after award, people notice."*

*Lynn Fortney*

*Majors/Chapter Project of the Year Award*



Jan LaBeause and Lynn Fortney



Lynn Fortney and J. Michael Hoeman