



# SOUTHERN EXPRESSIONS

THE OFFICIAL NEWSLETTER OF THE  
SOUTHERN CHAPTER OF THE MEDICAL LIBRARY ASSOCIATION

## INSIDE THIS ISSUE:

Message from the Chair	PAGE 2
Focus on Programming: Orientation Ideas from around the Region	PAGE 3
Alabama	PAGE 6
Florida	PAGE 7
Georgia	PAGE 14
South Carolina	PAGE 17
Tennessee	PAGE 19
SC/MLA Elected Officials	PAGE 23
About Southern Expressions	PAGE 24

# MESSAGE FROM THE CHAIR

BY SKYE BICKETT

Spring is the time of year to refresh and renew ourselves. Southern Chapter members are go-getters, so I hope you all take time for yourself and relax between projects. Once you've relaxed for a bit, you might want to think about some upcoming opportunities within our region.

[SCMLA offers various awards and grants](#) for members, and some are available year-round. I encourage you to pat someone on the back by nominating them (or yourself) for awards like the Hospital Librarian of the Year or the T. Mark Hodges Outstanding Service Award. If you'd like to learn more about research, consider applying for the Jocelyn Rankin Memorial Scholarship and get funding to take a class or attend a workshop. There are several other awards to apply for, so I invite you to browse the [SCMLA Awards and Grants page](#) and see how they can help you.

You can also get additional [training](#) and [funding](#) from NNLM Region 2. There is a variety of training offered by all NNLM regions throughout the year, and staggered funding for different awards means that you can apply throughout the year to get funding for your projects. If you have questions or want to know more about what NNLM Region 2 offers, contact the fantastic and helpful [RML staff](#).

If you want to mix a little fun and work, [MLA '22: Reconnect, Renew, Reflect](#) will be held in New Orleans, Louisiana, from May 3-6, 2022, with a virtual kickoff on April 27th. If you're able to attend, I hope you enjoy the meeting and the city of New Orleans. We have several SCMLA members presenting at the conference, so make sure to support your colleagues and let them know what a great job they're doing.

Saving the best for last, I want to recognize Emily Brennan, SCMLA Chair-Elect/Program Chair, and the Program Committee for steadily planning our annual meeting, being held in Montgomery, Alabama, from October 19-23, 2022. I look forward to seeing many of you there and can't wait for our first in-person meeting since 2019. The preliminary program looks amazing, and I can't wait to see what she and the committee have in store for us. Remember to take time for yourself and relax before refreshing your skills and sharing your knowledge with others throughout this year. Happy Spring, everyone!

Skye Bickett

“  
**REMEMBER TO TAKE  
TIME FOR YOURSELF  
AND RELAX BEFORE  
REFRESHING YOUR  
SKILLS AND  
SHARING YOUR  
KNOWLEDGE WITH  
OTHERS  
THROUGHOUT THIS  
YEAR.**

# FOCUS ON PROGRAMMING: ORIENTATION IDEAS FROM AROUND THE REGION

## Tried and True Programming Ideas to Engage Learners

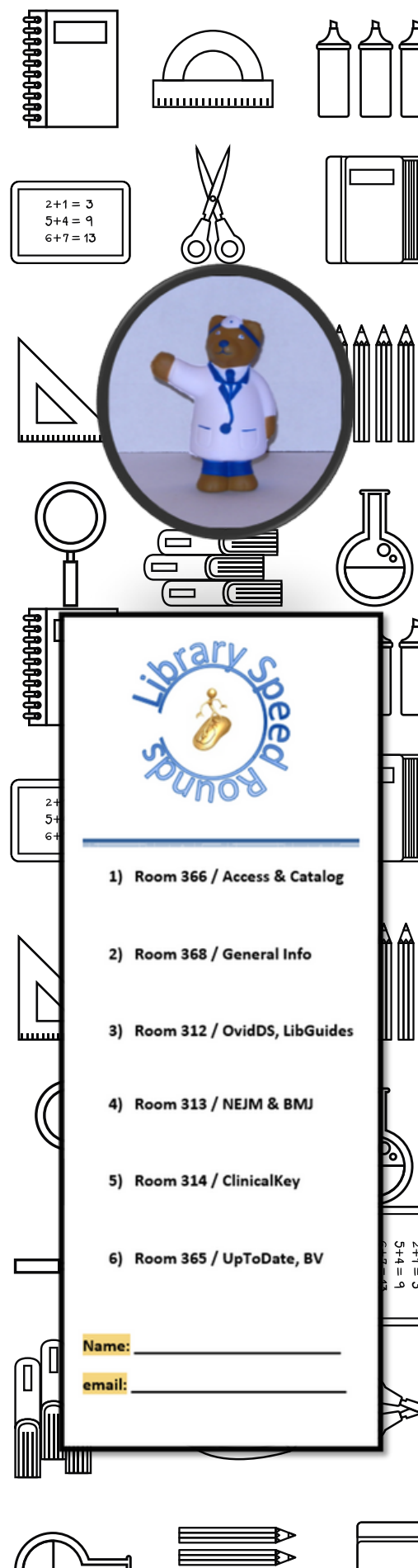
By: Loretta Westcott

UofSC School of Medicine Greenville and Prisma Health:  
Greenville, SC

A deluge of information delivered during orientation that lasts all day or even days can be difficult for learners for a variety of reasons. We know that students will benefit from an early understanding of the variety of resources and study tools offered by the library and that this knowledge will make their life easier, but how do we garner their attention and make sure this information is heard? In Greenville, we have tried a few ideas that have proven to be successful and garnered positive feedback from learners. Although, the pandemic necessitated changes and cancellations to in-person learning, we hope to return to some version of the following opportunities in the future.

### Library Speed Rounds

In 2014, the library staff came up with the idea of Library Speed Rounds, based on the idea of speed dating. The event is held apart from regular medical school student orientation. Speed Rounds begin with all students in the same room for a short 15-minute library introduction. Students are then divided into randomly assigned groups of 12-14 each. Each group makes the rounds, switching rooms every 7 minutes, to learn about a different library resource or service in each room. Each student is given a punch card to indicate their attendance at each round. At the end of the event, door prizes are awarded by drawing from the stack of punch cards. Prizes have included T-shirts, flash cards, gift cards, and books. In addition, each student receives a Dr. Bear stress toy when turning in the punch card. The library email and phone number are on the back of the bear. Student services helps with scheduling and logistics for the event and have made student attendance mandatory. During focus groups, students indicated that they felt they had learned from this style of information delivery and liked traveling to different rooms.







(Westcott con't)

### **BAGELS : Books and Great Electronic Library Sources**

Since the library had added several new resources near the middle of the academic year, we decided to get the word out by offering a drop-in learning opportunity for medical students in December, calling it BAGELS (Books and Great Electronic Library Sources). We enticed students to attend the morning event by offering bagels and coffee. We set up a display board featuring resources and provided updated laminated pocket reference cards with new resources added. Laptops were set up to provide demonstrations and students could ask questions about any resource. Over 125 students attended, and we learned that none of them drank decaffeinated coffee!

### **Library Jeopardy**

For physician residents, pharmacy students, and nurses, a promise of a short game of Jeopardy at the end of a presentation has helped capture the attention of the learner. Questions are based on material covered and electronic or print handouts usually help the attendee answer the question.

### **Small Rewards for Participating**

Occasionally, bookmarks, cereal bars, pens, or other small tokens are awarded for class participation. Typically, a question is posed to the group and the first person responding gets to choose an item from a basket that can be passed easily during the session.

## Two Ways to Engage Students During Orientations

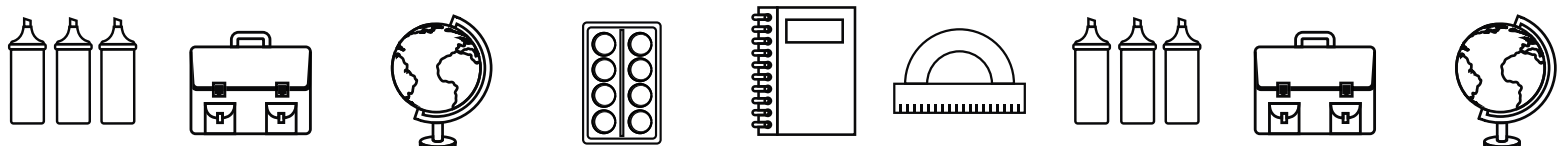
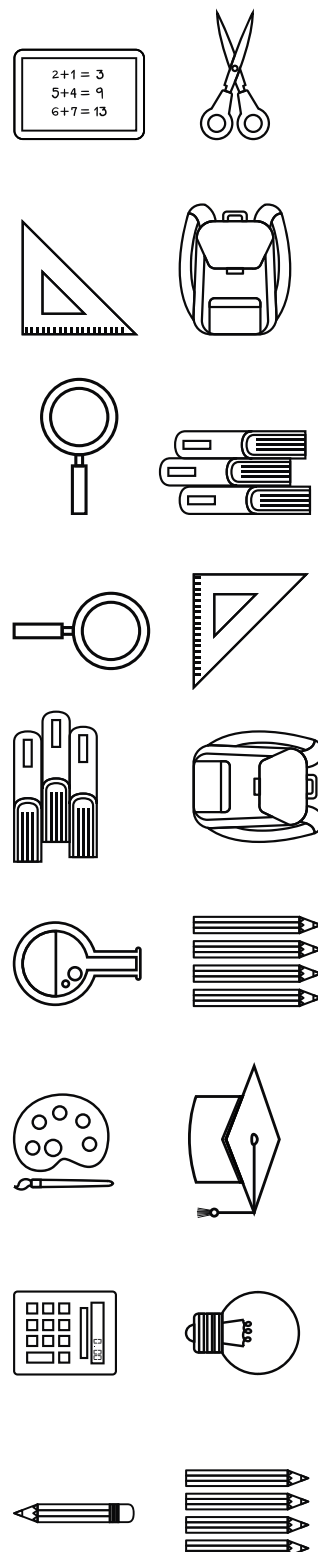
By Adelia Grabowsky

Auburn University's MSN, DNP, and RN to BSN programs are completely online, however, students are required to attend an orientation before classes begin. Orientations were in-person before COVID, via Zoom for two years, and are now hybrid with both in-person and Zoom options. I am asked to spend 1 to 1.5 hours at each orientation speaking about the library. It can be difficult to engage students since they are not at point-of-need (no assignments yet) and they are likely overwhelmed with program information before I begin to speak.

Several years ago, I decided to change my approach to orientations, adding two elements. First, I provide students with a structured handout to take notes. This provides them with reference notes to use when they begin an assignment. Second, I begin my presentation by asking students to reflect on the last time they had to search for information and then record the biggest issue they faced in finding or using the information they found. In the first few years, I asked them to do this on paper, now I have them answer a [LibWizard Poll](#). I then explain I will be addressing these common information seeking problems and assure them that they should hear something to help with their problem.

At the end of class, I use a [second poll](#) to ask them if they did learn something that would help and if they say yes or maybe, I ask them to explain what they learned.

Analyzing the data allows me to see what issues student struggle with most (top answers seem to consistently be 'knowing where to search' and 'finding an appropriate amount of information'). I can also see if they are able to articulate something that would help with their problem. An example would be someone who chose 'finding too much information' as their problem and then responds with 'using database limits' as a solution. Being able to offer appropriate potential solutions suggests students are engaged and that learning has occurred.



# AROUND THE STATES



## AUBURN UNIVERSITY LIBRARIES

### Publications and Presentations

Barrett JR, Innes GK, **Johnson KA**, Lhermie G, Ivanek R, Greiner Safi A, Lansing D. Consumer perceptions of antimicrobial use in animal husbandry: A scoping review. *PLOS ONE*, 2021;16(12), Article e0261010. <https://doi.org/10.1371/journal.pone.0261010>

Brown L, Briscoe G, **Grabowsky A**. The influence of journaling on nursing students: A systematic review. *Journal of Nursing Education*, 2022;61(1), 29-35. <https://doi.org/10.3928/01484834-20211203-01>

Garza KB, Ford CR, Moseley LE, Wright BM, Davis BR, **Grabowsky A**. *Designing learning activities to promote empathy for patients among health professions students*. Southern Regional Faculty & Instructional Development Consortium (SRFIDC), Auburn, Alabama. 2022.





**Compiled by Carrie D. Adams**

**HARRIET F. GINSBURG HEALTH SCIENCES LIBRARY,  
UNIVERSITY OF CENTRAL FLORIDA COLLEGE OF MEDICINE**  
**Submitted by Shalu Gillum**

**Popping into the Library, but not for Popcorn**

For ten years the library's flagship outreach event had been our weekly Popcorn Day, held every Thursday. Since returning from full-time remote work in summer of 2021, university events policies have been unpredictable due to the pandemic, and the decision was made to pause Popcorn Day until it was safe to have groups gathering in the library and to serve open food. To continue providing fun, stress-relieving outreach activities to our medical students, the library's Public Services team started providing monthly pop-up activities. We had previously provided such activities in the library, including adult coloring and Valentine's Day cards, but sporadically throughout the year.

Now events are themed around monthly observances, and typically have no or very little cost associated with obtaining supplies. Recent pop-up events include a gratitude tree for Thanksgiving where students could write what they are thankful for on a leaf cutout; cocoa and cookies in December for the holidays; compliment cards for National Compliment Day; a new variety of tea bag each week in January at our beverage station for National Hot Tea Month; and llama-themed Valentine's Day cards. Of course, Library Llama was there to participate in many of the activities.

In January, a group of students from the Asian Pacific American Medical Student Association reached out to inquire whether they could leave red envelopes for good luck in celebration of Lunar New Year on our activity table. They even hung a paper lantern to decorate the space. The events are advertised on the library's social media channels on the day they are held. These pop-up events have been an easy, low-cost way to encourage students to come to the library. They have also allowed us to provide some much-needed fun and stress-relief to those already hunkered down studying in our space.



# HARRIET F. GINSBURG HEALTH SCIENCES LIBRARY, UNIVERSITY OF CENTRAL FLORIDA COLLEGE OF MEDICINE

CON'T



Small note cards were purchased for our National Compliment Day pop-up activity.



Library Llama helped promote our National Hot Tea Month activity.



Red envelopes and a paper lantern were provided by the Asian Pacific American Medical Student Association for Lunar New Year.

## Publications

- **Herring P.** Review Update: Facts & Comparisons eAnswers. *Doody's Collection Development Monthly*. 2022. <http://dcdm.doody.com/2022/02/review-update-facts-comparisons-eanswers/>
- **Williams N.** Personal Librarian Programs in Medical and Academic Health Sciences Libraries: A Preliminary Study. *J Med Libr Assoc*. 2022;110(1):87-96. doi: <https://doi.org/10.5195/jmla.2022.1290>.

## Presentations

- Blake L, **Gillum S**, Laera E, Williams J. *In the Aftermath: How a Global Pandemic Changed Information Services*. Panel Discussion at Experience MLA (Medical Library Association). 2022. Virtual.
- De Groote S, **Gotschall T**, Gutzman K, Newman J, Ramirez M. *Impact Challenges: Promoting the Responsible Use of Scholarly and Research Metrics*. MLA Scholarly Communication Caucus Shop Talk. Panel. 2022. Virtual.
- Vardell E, Meyer C, **Gotschall T**, Hoskins K, Rios D. *Tips and tricks for online instructional videos*. Panel Discussion at Experience MLA (Medical Library Association). 2022. Virtual.



## UNIVERSITY OF FLORIDA

Submitted by Carrie D. Adams

## Welcome

**Borui Zhang** newly joined the department of Academic Research Consulting and Services at HSCL in December 2021 as the Natural Language Processing Specialist. Prior to that, Dr. Zhang earned a doctorate degree in Linguistics and a minor in computer science at the University of Minnesota, Twin Cities. Zhang's research interests are natural language processing and machine learning, particularly on how to use machine learning methods to help studies in low-resource languages/data. Now, Zhang leads the AI team at ARCS, to support AI research activities by students, faculty, and staff cross-campus.

## Presentations

- **Adams, C.D., Harnett, S.** (2022). *The librarian is in: Health reference for non-health librarians*. Florida Libraries Online Conference. Online.  
<https://floridalibrarytraining.com/physical-health/>

## Publications

- Chang, C. W., Miki, T., **Ye, H.**, Souissi, S., Adrian, R., Anneville, O., Agasild, H., Ban, S., Be'eri-Shlevin, Y., Chiang, Y. R., Feuchtmayr, H., Gal, G., Ichise, S., Kagami, M., Kumagai, M., Liu, X., Matsuzaki, S. S., Manca, M. M., Nöges, P., Piscia, R., ... Hsieh, C. H. (2022). Causal networks of phytoplankton diversity and biomass are modulated by environmental context. *Nature communications*, 13(1), 1140.  
<https://doi.org/10.1038/s41467-022-28761-3>
- Houk, K. M., Bartley, K., **Morgan-Daniel, J.**, & Vitale, E. (2022). We are MLA: a qualitative case study on the Medical Library Association's 2019 Communities Transition. *Journal of the Medical Library Association : JMLA*, 110(1), 34–42.  
<https://doi.org/10.5195/jmla.2022.1225>
- Lo-Ciganic, W. H., Hincapie-Castillo, J., Wang, T., Ge, Y., Jones, B. L., Huang, J. L., Chang, C. Y., Wilson, D. L., Lee, J. K., Reisfield, G. M., Kwoh, C. K., Delcher, C., Nguyen, K. A., Zhou, L., Shorr, R. I., Guo, J., Marcum, Z. A., Harle, C. A., Park, H., Winterstein, A., ... **Adkins, L.**, Gellad, W. F. (2022). Dosing profiles of concurrent opioid and benzodiazepine use associated with overdose risk among US Medicare beneficiaries: Group-based multi-trajectory models. *Addiction (Abingdon, England)*, 10.1111/add.15857. Advance online publication. <https://doi.org/10.1111/add.15857>
- **Morgan-Daniel, J.**, Hough, C., **Tennant, M. R.**, **Edwards, M. E.**, **Adkins, L. E.**, & Rethlefsen, M. L. (2022). Developing a Culture of Inclusivity through a Library Diversity, Equity, and Inclusion Team. Part 1: Team Formation. *Medical reference services quarterly*, 41(1), 1–12. <https://doi.org/10.1080/02763869.2021.2020565>
- Pesata, V., Colverson, A., Sonke, J., **Morgan-Daniel, J.**, **Schaefer, N.**, Sams, K., Carrion, F. M., & Hanson, S. (2022). Engaging the Arts for Wellbeing in the United States of America: A Scoping Review. *Frontiers in psychology*, 12, 791773.  
<https://doi.org/10.3389/fpsyg.2021.791773>

## UNIVERSITY OF FLORIDA

CON'T

## Publications (con't)

- Solberg, L. M., Sehgal, M., Patel, P., Akers, K. G., **Pomputius, A.**, Schwartz, A., Scheiner, S. R., Small, A., Hidlebaugh, E., Johnson, T. M., 2nd, & Vaughan, C. P. (2022). Updating the landmark literature for the practice of geriatrics: Notable articles from 2012-2019. *Journal of the American Geriatrics Society*, 70(3), 872–879.  
<https://doi.org/10.1111/jgs.17661>
- Yang, S., Orlova, Y., Lipe, A., Boren, M., Hincapie-Castillo, J. M., Park, H., Chang, C. Y., Wilson, D. L., **Adkins, L.**, & Lo-Ciganic, W. H. (2022). Trends in the Management of Headache Disorders in US Emergency Departments: Analysis of 2007-2018 National Hospital Ambulatory Medical Care Survey Data. *Journal of clinical medicine*, 11(5), 1401.  
<https://doi.org/10.3390/jcm11051401>

**UNIVERSITY OF SOUTH FLORIDA (USF)  
HEALTH LIBRARIES**

**Submitted by Tsu Yin Lue and Stephanie M. Tomlinson**

## Welcome Aboard

The USF Health Libraries recently welcomed Janet Chan and Tsu Yin Lue to its Research and Education Unit. **Janet Chan, MLIS, AHIP, RN** is our new College of Nursing Liaison. A recent graduate of the USF School of Information program, Janet's research interests are eHealth and graphic medicine. **Tsu Yin Lue, MLIS**, joins us from our Collection Management Unit as our new Staff Assistant.

- **Chan J.** Exploring digital health care: eHealth, mHealth, and librarian opportunities. *Journal of the Medical Library Association*. 2021;109(3):376-381.  
doi:10.5195/jmla.2021.1180
- Taylor NG, Shereff D, Baum B, **Chan J**, Cannon P. Moving beyond the book list: building a pediatric responsive library program. *Journal of Hospital Librarianship*. 2022:1-14.  
doi:10.1080/15323269.2021.2019521



**Janet Chan, MLIS, AHIP, RN**



**Tsu Yin Lue, MLIS**

**UNIVERSITY OF SOUTH FLORIDA (USF)  
HEALTH LIBRARIES**

CON'T



**Laura A. Murray, MSIS, MBA, AHIP, HCA Graduate Medical Education (GME) Librarian**, presented at the International Congress of Medical Librarianship and Association for Health Information and Libraries Africa, (ICML + AHILA): Evaluating Newly Created Graduate Medical Education Library Programs: Sustainability in Medical Education, poster session.

A Fellow in the Medical Library Association's (MLA) Research Training Institute (RTI), Murray's *Examining the Role of the Health Science Librarian in Supporting LGBTQ+ Information Literacy Among Health Science Students, Residents, Fellows, and Faculty*, poster will be presented at MLA '22 conference in New Orleans.

Chair-elect of the MLA LGBTQ+ caucus, Murray is also presenting in two immersion sessions: *Let's Get Critical: Understanding and Applying Critical Theory in Library Practice*; and *Reflect, Renew, Reconnect to Envision a New Service Model for You, Your Customers and Your Library*.

**Amanda Chiplock, Assistant Director for Collection Management**, graduated December 2021 with a PhD in Curriculum & Instruction. Dr. Chiplock's successfully defended dissertation entitled *Operationalizing accreditation standards for self-directed learning: Exploring the impact of contextual factors and capacity on undergraduate medical education* is available via ProQuest Dissertations & Theses database:

<https://www.proquest.com/dissertations-theses/operationalizing-accreditation-standards-self/docview/2621603831/se-2>

Dr. Chiplock has also accepted roles within the USF Health, Department of Medical Education, Morsani College of Medicine including Integration Director for Self-Directed Learning, Co-Leader of the Medical Education Scholarly Concentration, and Affiliate Faculty member.

Recent lectures by invitation include "Building Capacity for Self-Directed Learning in Clinical Learning Environments," for the USF Clinical Educator Learning Series (2021, November) and the Lehigh Valley Health Network, Education Grand Rounds (2022, January).

**UNIVERSITY OF SOUTH FLORIDA (USF)  
HEALTH LIBRARIES**

CON'T

Dr. Chiplock's recent scholarly activities include:

- **Chiplock, A.**, McCarthy, K., & Ashley, M. (2022, February). *Implementing self-directed learning initiatives in medical education*. Poster session presented at the annual symposium of the International Society for Self-Directed Learning, Cocoa Beach, FL.
- **Chiplock, A.** (2022, February). *Operationalizing accreditation standards for self-directed learning: Exploring the impact of contextual factors and capacity on undergraduate medical education*. Paper presented at the annual symposium of the International Society for Self-Directed Learning, Cocoa Beach, FL.
- **Chiplock, A.**, McCarthy, K., & Ashley, M. (2022, May). *Implementing self-directed learning initiatives in medical education*. Poster session to be presented at the annual meeting of the Medical Library Association, New Orleans, LA [virtual presentation].

**Krystal Bullers, MLIS, AHIP**, recently published two review articles with colleagues in the Taneja College of Pharmacy. The first study suggests their findings warrant further investigation to elucidate the association between SGLT2 inhibitor use and the development of Fournier's gangrene. The second study supports the use of pharmacist medication counseling to increase medication adherence and to reduce 30-day hospital readmissions and emergency department visits

- Tran BA, Updike WH, **Bullers K**, Serag-Bolos E. Sodium-Glucose Cotransporter 2 inhibitor use associated with Fournier's gangrene: a review of case reports and spontaneous post-marketing cases. *Clinical Diabetes*. 2022;40(1):78–86. doi:10.2337/CD21-0015
- Kelly WN, Ho M-J, **Bullers K**, Klocksieben F, Kumar A. Association of pharmacist counseling with adherence, 30-day readmission, and mortality: a systematic review and meta-analysis of randomized trials. *Journal of the American Pharmacists Association*. 2021;61(3):340-350.e5. doi:10.1016/j.japh.2021.01.028.

**Stephanie Tomlinson, MLIS, AHIP**, accepted the role of Affiliate Faculty Status in the Department of Medical Education at the Morsani College of Medicine (MCOM). Tomlinson also became a full voting member of the MCOM Curriculum Committee and the Course Review Subcommittee.

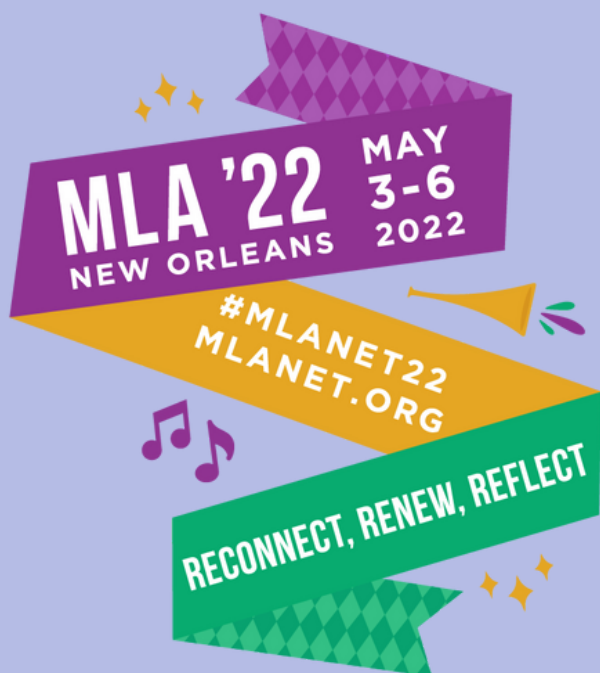
**Dr. Ardis Hanson, MLIS, AHIP, Stephanie Tomlinson, MLIS, AHIP, and Laura Murray, MSIS, MBA, AHIP**, were invited to present a Clinical Educator Learning Series (2021-2022) *Grant Writing Workshop 101* for the USF and HCA GME faculty, fellows, and residents in December 2021.



UNIVERSITY OF SOUTH FLORIDA (USF)  
HEALTH LIBRARIES

CON'T

The USF Health Libraries also presented two workshops at the USF Libraries Workshops for Researchers series. **Dr. Ardis Hanson** and **Krystal Bullers** presented *Introduction to Systematic Reviews* in November 2021, followed by a presentation by **Krystal Bullers** and **Stephanie Tomlinson** on *Systematic Review Tools* in December 2021.

UPCOMING OPPORTUNITIES TO  
CONNECTSC/MLA  
2022 ANNUAL  
MEETINGMontgomery, AL  
October 19-23, 2022



## **ROBERT B. GREENBLATT, M.D. LIBRARY, AUGUSTA UNIVERSITY**

### **Inaugural Dean of Libraries**

Brad Warren, former Senior Associate Dean of Library Services at the University of Cincinnati, has been named Augusta University's inaugural Dean of Libraries.

Reporting to the executive vice president for academic affairs and provost, as the dean of libraries, Warren will oversee the Robert B. Greenblatt, M.D. Library on the Health Sciences Campus and the Reese Library on the Summerville Campus.



"Brad is an innovative and visionary leader who will serve in this historic position as our first-ever dean of libraries. Brad will work alongside AU's other 10 deans to elevate our libraries, so our libraries can support our enrollment and research growth. Having worked with Brad previously, I know he is the right person at the right time for AU," said Dr. Neil MacKinnon, provost and executive vice president for academic affairs.

Warren has extensive experience in strategic planning work and facilities development necessary to lead a research library. At the University of Cincinnati, he led the development and creation of the UC Libraries' 10-year strategic sizing charter in response to an anticipated 50% increase in student enrollment.

At Yale University, Warren co-led the team responsible for the \$20 million Sterling Memorial Library Nave restoration project, implementing a radical redesign of library services and spaces.

## ROBERT B. GREENBLATT, M.D. LIBRARY, AUGUSTA UNIVERSITY **CON'T**

"I was drawn to Augusta University for the opportunity to lead libraries in a public institution that is growing in enrollment and research," Warren said. "This new role signifies the university's commitment to providing excellence to its faculty, students and staff and achieving its aspirations through an investment in its libraries. I am so excited to bring my passion and creativity in leading the library faculty and staff, collaborating with my peer deans, and ensuring the success of Provost MacKinnon's vision at AU."

Warren serves as a member, leader and active contributor to the American Library Association and Association of College and Research Libraries. He has worked at several research universities in a variety of positions including Yale University, UNC Charlotte, and North Carolina State University. He is a published author and speaker on transformative change and innovative services in research libraries.

Warren earned both his bachelor's degree in comparative literature and history and master's degree in library science from Indiana University.

### Inaugural Book Club

The Robert B. Greenblatt, M.D. Library hosted the inaugural Graduate School Book Club (GSBC) meeting on February 17, to discuss the book, *People We Meet on Vacation* by Emily Henry. Readers from the Biomedical, Allied Health, Nursing, and Masters of Public Health programs attended (in-person and virtually) and were also treated to some delicious refreshments. The GSBC plans to meet every month and alternate its meeting locations between the libraries of the health sciences and liberal arts campuses.



Join us!

## Graduate School Book Club

beginning  
THURSDAY  
**MARCH 17, 2022**  
**6:00 PM**  
GREENBLATT LIBRARY  
ROOM 2103  
Virtual option also available.  
Refreshments will be served.

 AUGUSTA UNIVERSITY  
THE GRADUATE SCHOOL

Book Club will be held the 3rd Thursday of every month at 6 PM.

**ROBERT B. GREENBLATT, M.D. LIBRARY,  
AUGUSTA UNIVERSITY** **CON'T**

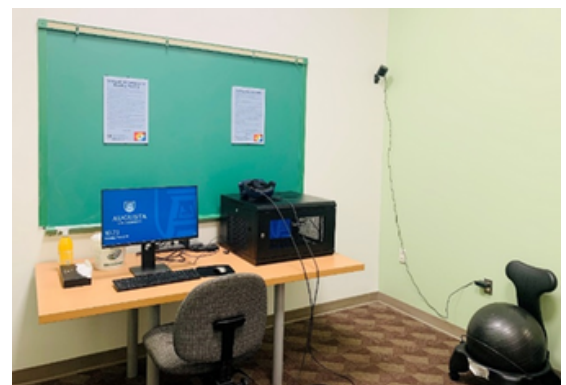
**Virtual Dimensions Studio at the Greenblatt  
Library Open for Business**

The Greenblatt Library on the health sciences campus is pleased to announce the availability of its Virtual Dimensions Studio – a space on the first floor of the library where members of all Augusta University campus communities are welcome to use virtual reality (VR) equipment. There are visual deficit simulation modules, a virtual reality escape room, as well as some relaxation and wellness experiences available.

Users are asked to sign up to use the space using an online form linked from the Greenblatt Library's home page or from the Creative Technology Lab research guide.

Reservations can be made in one-hour increments with a maximum of two hours per day. New users will be required to go through a brief orientation to use the space and equipment and to sign a release of liability form. The VR controllers can be checked out from the Information Desk using a JagID card.

The VR equipment was funded by a Technology Improvement Award from the Network of the National Library of Medicine for which faculty from the Medical College of Georgia and the School of Computer and Cyber Sciences partnered with the Greenblatt Library. More modules are being planned to add to the available VR experiences.





**ROBERT B. GREENBLATT, M.D. LIBRARY,  
AUGUSTA UNIVERSITY** **CON'T**

**Publications and Presentations**

Bolgia L, **Smith L**, Novak M. *Physical Therapy Student Perceptions for an Embedded Medical Librarian in an Evidence-Based Practice Course*. American Physical Therapy Association (APTA) Combined Sections Meeting – Poster Session. 2022. Abstract Link: <https://apta.confex.com/apta/csm2022/meetingapp.cgi/Paper/31345>

**Kouame G**, Hendren S. Library Tools at the Nurses' Station: Exploring Health Information Seeking Behaviors and Needs of Nurses in a War Veterans Nursing Home, *JMLA*, April 2022, in press.

**Darra Ballance** and the Area Health Education Centers (AHEC) Program Office are proud to present the 2022-24 edition of *Health Careers in Georgia*, our flagship health professions manual with information on 90+ health careers: <https://www.augusta.edu/ahec/hcg>



**SCHOOL OF MEDICINE LIBRARY,  
UNIVERSITY OF SOUTH CAROLINA, COLUMBIA, SC**

**Library Strategic Planning Retreat**

The UofSC School of Medicine Library staff held a Strategic Planning Retreat on March 9, 2022. Among the agenda items were review of accomplishments and discussion of projects and priorities for the coming year. The staff also toured the Simulation and Interactive Learning Center on campus.

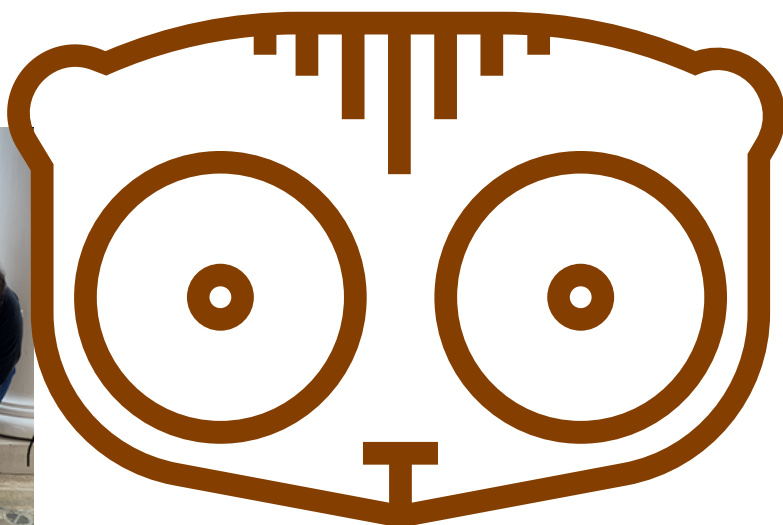
SCHOOL OF MEDICINE LIBRARY,  
UNIVERSITY OF SOUTH CAROLINA, COLUMBIA, SC  
**CON'T**

### Femur Antics

Femur the Library Lemur has been busy since she joined our staff last fall. She certainly keeps us on our toes with her holiday outfits and silly antics! Students have been especially fond of Femur, and often ask where she is when she can't be readily seen. Sometimes we have to look for her, since she seems to enjoy hiding out in fun Library locations!

Follow the antics of Femur the Library Lemur through our social media accounts:

- <https://www.instagram.com/uofscsomlibrary>
- <https://www.facebook.com/uofscsomlibrary>

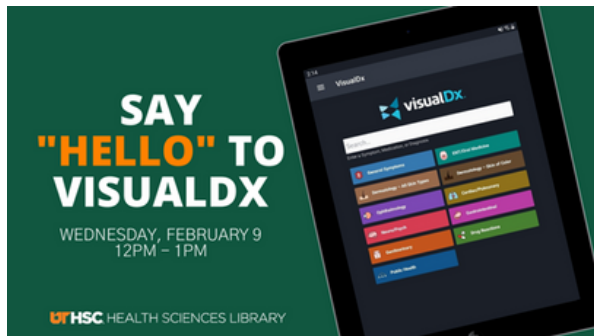




## UNIVERSITY OF TENNESSEE HEALTH SCIENCE CENTER

### Snack Time!

The UTHSC Library was finally able to resume monthly snack events! This time we were able to give away 512 snacks to our patrons.



### Welcome, VisualDx

On February 9th we officially launched the newest database in our repertoire – VisualDx. As a part of our rollout 500 patrons explored the product and 35 people came to our virtual launch party.

### Clinical Research Returns

The UTHSC Library recorded an 11-part series of webinars for clinical researchers with the Tennessee Clinical and Translational Science Institute (TN-CTSI) in October of last year. Though it has been months since the completion of the project, we have seen monthly LibGuide views increase from approximately 50,000 to 60,000 views to 80,000 to 90,000 views!

### Published and It Feels So Good!

**Hilary Jasmin, UTHSC Research & Learning Services Librarian**, had an article published in the January 2022 edition of the *Journal of the Medical Library Association*. You can catch her article, "Implementation of the Cognitive Apprenticeship Model for Enhancement of Advanced Searching Skills in a Pharmacy Academia Rotation," online now.

**ANNETTE AND IRWIN ESKIND FAMILY BIOMEDICAL  
LIBRARY AND LEARNING CENTER,  
VANDERBILT UNIVERSITY, NASHVILLE, TN**

**Eskind Welcomes Two New Staff Members**



**Rachel Davis, MLIS**, joined Eskind in October 2021 as a Library Specialist in Document Delivery Services. Rachel graduated with her MLIS in July of 2021 from Valdosta State University and previously attained a BA in English from the University of Tennessee. She is assisting with Eskind's Document Delivery Service (DDS) through fulfilling borrowing and lending requests for patrons and monitoring interlibrary loan statistics. She is interested in learning more about the research areas of data curation and information visualization.

**Kayce Gill, MSIS**, joined Eskind in January as the Health Sciences Collections Librarian. In this role, she is responsible for ensuring EBL's collections meet the clinical, research, and teaching needs of faculty, staff, and students and providing in-depth reference, consultation, and information services. Before joining EBL, she served as the Health Sciences Librarian for Lipscomb University's College of Pharmacy and Health Sciences. She has experience in managing e-resources, teaching instruction classes, and implementing research support tools to improve the faculty, staff, and student research experience. Her research interests include health sciences students' confidence in their literature evaluation skills, health sciences students' information seeking behaviors, and the use of gamification to teach information literacy principles.



**Professional Activities**

**Philip Walker** has been elected as Vice Chair for Archives and Resources for the American Medical Informatics Association Ethical, Legal, and Social Issues Working Group. Philip also began a three-year term on the AAHSL Future Leaders Committee.



**ANNETTE AND IRWIN ESKIND FAMILY BIOMEDICAL  
LIBRARY AND LEARNING CENTER,  
VANDERBILT UNIVERSITY, NASHVILLE, TN**

CON'T

**Recent Publications and Presentations  
2022**

- Liao ZW, Le C, Kynes JM, Niconchuk JA, Pinto E, **Laferriere HE**, Walters CB. Paediatric chronic pain prevalence in low- and middle-income countries: a systematic review and meta-analysis. *EClinicalMedicine*. 2022;45:101296. doi:10.1016/j.eclinm.2022.101296

**2021**

- Boehm LM, Jones AC, Selim AA, Virdun C, Garrard CF, **Walden RL**, et al. Delirium-related distress in the ICU: a qualitative meta-synthesis of patient and family perspectives and experiences. *Int J Nurs Stud*. 2021;122:104030. doi:10.1016/j.ijnurstu.2021.104030
- Das S, Du L, Lee CL, Arhin ND, Chan JA, Kohn EC, Halperin DM, Berlin J, **Laferriere H**, Singh S, Kunz PL, Dasari A. Comparison of design, eligibility, and outcomes of neuroendocrine neoplasm trials initiated from 2000 to 2009 vs 2010 to 2020. *JAMA Netw Open*. 2021;4(10):e2131744. doi:10.1001/jamanetworkopen.2021.31744. PMID: 34705010.
- Douthit BJ, **Walden RL**, Cato K, et al. Data science trends relevant to nursing practice: a rapid review of the 2020 literature. *Appl Clin Inform*. 2022;13(1):161-179. doi:10.1055/s-0041-1742218
- Hash MG, **Walker PD**, **Laferriere HE**, Melton L, Heller LS, Phillips JA 3rd. Efficacy of virtual and asynchronous teaching of computer-assisted diagnosis of genetic diseases seen in clinics. *Am J Med Genet A*. 2021 Dec 30. doi:10.1002/ajmg.a.62628. Epub ahead of print.
- Liao ZW, Le CH, Kynes JM, Niconchuk JA, **Laferriere H**, Walters CB. A Systematic review and meta-analysis on the prevalence of pediatric chronic pain in low-and-middle income countries (oral presentation). 2021 American Society of Anesthesiologists (ASA) Virtual Annual Meeting.
- Parekh K, Russell R, Davidson M, Moore D, **Walker P**, Terhune K, Cutrer B. *Ready for residency: a conceptual model to bridge the transition (poster)*. ChangeMedEd 2021 virtual meeting.
- **Walker PD**, Dillingham RM, Caton MA, **Laferriere HE**, **Walden RL**, **Ivey C**, and the VUMC Clinical Practice Committee. *The Nursing Wiki Pilot Project: facilitating EBP through improved accessibility, collaboration, and communication (oral presentation)*. Accepted for presentation at the 2021 Virtual American Nursing Informatics Association New York Tri-Chapter Fall Symposium.
- **Walker PD**. *Misinformation and disinformation in health care: the emotional journey of a health information professional (Invited Speaker)*. 2021 North Carolina Area Health Education Centers Information and Library Services Discipline Team Virtual Meeting, September 29, 2021.
- **Walker P**, **Laferriere H**, **Walden RL**, **Ivey C**. The never-ending evolutionary saga of assessing and demonstrating the value of information services in a biomedical library. *Med Ref Serv Q*. 2021;40(4):369-382. doi:10.1080/02763869.2021.1987775
- **Walker PD**. *Movement or management: how can tomorrow's ejournals facilitate more actionable knowledge (oral presentation)?* 2021 International Academy of Nursing Editors (INANE) virtual meeting.

**ANNETTE AND IRWIN ESKIND FAMILY BIOMEDICAL  
LIBRARY AND LEARNING CENTER,  
VANDERBILT UNIVERSITY, NASHVILLE, TN**

CON'T

## **History of Medicine Collections**

### **New Digital Resources**

- We've added several items to our digital collections on [JSTOR](#), including
  - The full run (issues 1-30) of [Nutrition History Notes](#), published by the Vanderbilt Medical Library from 1977-1987
  - An anonymous 18th century English [cookbook](#), in manuscript
  - "[Mrs. Bastable's Receipt Book](#)," a 19th century English cookbook manuscript
  - [Notes taken by James L. Thompson at Transylvania University 1821-22 and Dr. James L. Thompson's records of Obstetrical cases, 1844-45, 1849-1855](#). Dr. Thompson kept careful records about his obstetrical patients in and around Hartsville, TN, including enslaved women (often by name).

### **Recent archival acquisitions**

- [Stanley Cohen papers addition](#)—Five new linear feet to the Stanley Cohen papers, including correspondence, photographs, audio-visual materials, and scientific instruments. Dr. Cohen shared the 1986 Nobel Prize in Medicine or Physiology with Rita Levi-Montalcini. The finding aid for this collection is available at <https://collections.library.vanderbilt.edu/repositories/3/resources/3>
- [Earl W. Sutherland collection addition](#) — Six linear feet of scrapbooks, awards, and other framed items and memorabilia, donated by Dr. Sutherland's son, Bill Sutherland. Earl Sutherland was the 1971 Nobel Laureate in Medicine or Physiology.
- Charles Lowe collection—Dr. Charles Lowe (1911-2003) of Lebanon, TN, maintained meticulous records over nearly four decades of practice, detailing the medical history, demographics, perinatal, and postnatal information of pregnant women and mothers in rural middle Tennessee. These records were donated to Vanderbilt by Dr. Lowe's colleague, Dr. Robert Bone. Because the collection consists almost entirely of personal health information of patients, we are still developing access policies that will allow for meaningful scholarship around this collection. We hope to make this collection available for research soon.



## SOUTHERN CHAPTER MEDICAL LIBRARY ASSOCIATION

Alabama Florida Georgia Mississippi Puerto Rico South Carolina Tennessee Virgin Islands

# SC/MLA Current Officers

Chair  
Chair-Elect/Program Chair  
Program Chair Elect  
Immediate Past Chair  
Secretary  
Treasurer  
Chapter Council Rep.  
Chapter Council Rep.-Alt  
MLA Nominating Comm. Nominee

Skye Bickett  
Emily Brennan  
Christine Willis  
Trey Lemley  
Elizabeth Laera  
David Petersen  
Elizabeth Hinton  
Maggie Ansell  
Lin Wu

## Appointed Officers

Archivists  
Website Administrators  
MLA Credentialing Liaison  
Discussion List Moderator  
Newsletter Co-Editors  
Parliamentarian  
Local Arrangements Co-Chairs

Sylvia McAphee & Peggy Balch  
Pamela Herring & Anya McKinney  
Terry Kit Selfe  
Nelle Williams  
Terri Gotschall & Lauren M. Young  
Francisco Fajardo  
Margaret Alexander & Inga Moten

## Committee Chairs

Bylaws  
Communications  
Fundraising & Scholarships  
Honors & Awards  
Hospital Libraries  
Membership  
Nominating  
Professional Development  
Program  
Research  
Strategic Planning

Christine Andresen  
Adelia Grabowsky  
Becca Billings  
Tariq Rahaman  
Christine Willis  
Gail Kouame  
Trey Lemley  
Megan Bell  
Emily Brennan  
Candace Vance  
Trey Lemley

**Southern Expressions**

**Published quarterly by the Southern Chapter of the Medical Library Association (SC/MLA).**

**Southern Expressions Editors:**

**Terri Gotschall**  
**Scholarly Communications Librarian**  
**University of Central Florida College of Medicine**  
**terri.gotschall@ucf.edu**

**Lauren M. Young**  
**Instruction Coordinator, Reference and Research Services**  
**Samford University**  
**lyoung2@samford.edu**

**Send Contributions to: Terri Gotschall**  
**terri.gotschall@ucf.edu**

**Content policy:**

**Statements and opinions expressed in Southern Expressions do not necessarily represent the official position of its co-editors or SC/MLA. Contributions may be edited for brevity, clarity, or conformity to style. Final decision on content shall be left to the discretion of the co-editors with the advice of the Communications Committee of SC/MLA.**